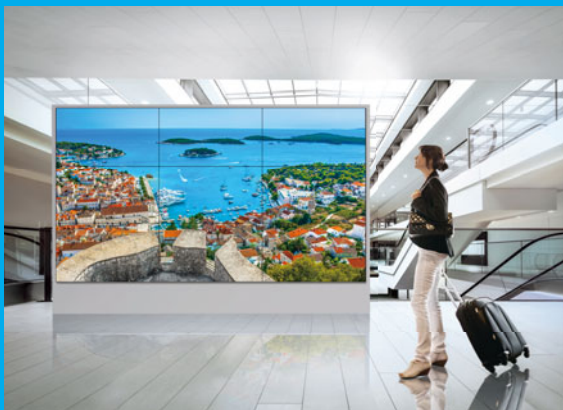


Panasonic CONNECT



Professional **DISPLAYS** Line-up Catalog December 2022



Worldwide Olympic and Paralympic Partner



Panasonic Professional Displays Lineup

Standard

SQ1 Series

500cd/m²

98" TH-98SQ1W
86" TH-86SQ1W
75" TH-75SQ1W

65" TH-65SQ1WA
55" TH-55SQ1WA
49" TH-49SQ1WA



*Actual resolution : 3840 x 2160p

Preliminary Available from CY2023 1H

SQE2 Series

500cd/m²

98" TH-98SQE2
86" TH-86SQE2
75" TH-75SQE2
65" TH-65SQE2

55" TH-55SQE2
49" TH-49SQE2
43" TH-43SQE2



*Actual resolution : 3840 x 2160p

SQE1 Series

500cd/m²

98" TH-98SQE1
86" TH-86SQE1
75" TH-75SQE1
65" TH-65SQE1

55" TH-55SQE1
49" TH-49SQE1
43" TH-43SQE1



*Actual resolution : 3840 x 2160p

Entry

EQ2 Series

500cd/m²

86" TH-86EQ2
75" TH-75EQ2
65" TH-65EQ2

55" TH-55EQ2
50" TH-50EQ2
43" TH-43EQ2



*Actual resolution : 3840 x 2160p

Model Number Legend

TH-86SQ1

Display body: TH, Screen size: 86, S/L: S, Standard: Q, Video wall: 1, Touch screen: B

F Full HD Q 4K UHD

★ The playable application format, GUI and operation procedure for the SQE2/SQE1 Series' Media Player function are different from those of other models.

Video Wall

VF2H 700cd/m²

55" TH-55VF2H

VF2 500cd/m²

55" TH-55VF2

LFV9 500cd/m²

55" TH-55LFV9



(VF2H/VF2 only)

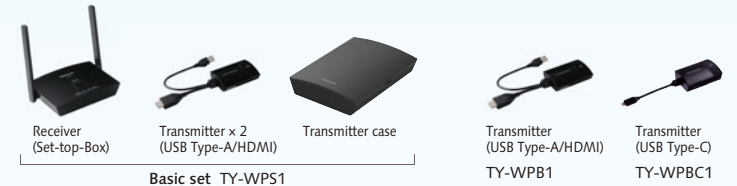
(LFV9 only)

(VF2H/VF2 only)

(LFV9 only)

PressIT

Wireless Presentation System



Basic set TY-WPS1

TY-WPB1

TY-WPBC1



Basic set TY-WPSC1

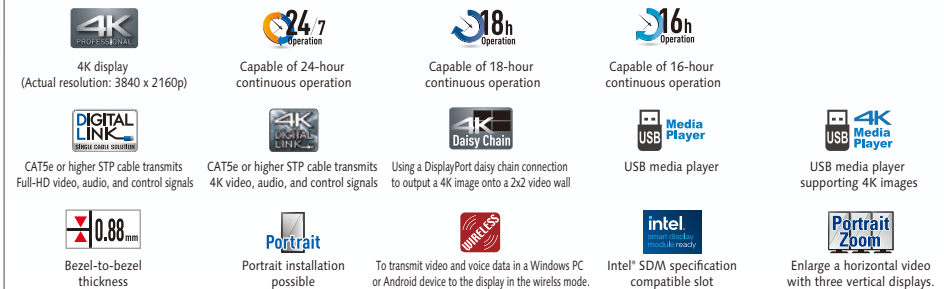
PressIT360

360 degree camera speakerphone



360 degree camera speakerphone
TY-CSP1

Pict Descriptions



SQ1 Series



Standard

Model no.		TH-98SQ1	TH-86SQ1		TH-75SQ1	TH-65SQ1
DISPLAY PANEL	Screen Size (Diagonal)/Aspect Ratio	98-inch (2476.9 mm)/16:9	86-inch (2174.2 mm)/16:9		75-inch (1892.7 mm)/16:9	65-inch (1638.9 mm) /16:9
	Panel Type	IPS/Direct LED	IPS/Edge LED		IPS/Edge LED	IPS/Edge LED
	Effective Display Area (W x H)	2158.8 x 1214.3 mm (84.99" x 47.80")	1895.0 x 1065.9 mm (74.60" x 41.96")		1649.6 x 927.9 mm (64.94" x 36.53")	1428.4 x 803.5 mm (56.23" x 31.63")
	Resolution (H x V)	3840 x 2160	3840 x 2160		3840 x 2160	3840 x 2160
	Brightness (Typ)	500 cd/m ²	500 cd/m ²		500 cd/m ²	500 cd/m ²
	Contrast Ratio	1300:1	1200:1		1200:1	1100:1
	Dynamic Contrast Ratio	50000:1	50000:1		—	—
	Response Time	8 ms (G to G)	8 ms (G to G)		8.0 ms (G to G)	8.0 ms (G to G)
	Viewing Angle (Horizontal/Vertical)	178°/178° (CR≥10)	178°/178° (CR≥10)		178 /178° (CR≥10)	178°/178° (CR≥10)
	Panel Surface Treatment	Anti-Glare (Haze 28 %)	Anti-Glare (Haze 28 %)		Anti-Glare (Haze 28 %)	Anti-Glare (Haze 28 %)
TERMINAL	HDMI In	HDMI TYPE-A Connector x 2 (HDCP2.2 supported)			HDMI TYPE A Connector x 2 (HDCP2.2 supported)	
	DisplayPort In	DisplayPort x 1 (HDCP2.2 supported)			DisplayPort x 1 (HDCP2.2 supported)	
	DisplayPort Out	DisplayPort x 1 (HDCP1.4 supported) ¹			DisplayPort x 1 (HDCP1.4 supported) ¹	
	USB	USB Connector (TYPE-A) x 2, DC 5 V/2 A, DC 5V/1A (USB 3.0 Supported)			USB Connector (TYPE-A) x 2, DC 5 V/2 A, DC 5V/1A (USB 3.0 Supported)	
	DVI-D In	DVI-D 24-pin x 1			DVI-D 24-pin x 1 (DVI Revision 1.0 Compliant), HDCP 1.1 compatible	
	Audio In (L/R)	Stereo Mini Jack (M3) x 2 (Shared with PC In)			Stereo Mini Jack (M3) x 2 (Shared with PC In)	
	PC In	Mini D-sub 15-pin x 1 (Female) ²			Mini D-sub 15-pin x 1 (Female)	
	Audio In (L/R)	Stereo Mini Jack (M3) x 2 (Shared with DVI-D In)			Stereo Mini Jack (M3) x 2 (Shared with DVI-D In)	
	Audio Out	Stereo Mini Jack (M3) x 1			30 W (15 W + 15 W) 10% THD	
	Serial In	D-sub 9-pin x 1, RS232C Compatible			D-Sub 9-pin x 1, RS232C Compatible	
GENERAL	LAN	RJ45 x 1, 10 BASE-T / 100 BASE-TX, Compatible with PLink™			RJ45 x 1, 10 BASE-T / 100 BASE-TX, Compatible with PLink™	
	DIGITAL LINK	RJ45 x 1, 100 BASE-TX, Compatible with long reach mode and PLink™			RJ45 x 1, 100 BASE-TX, Compatible with long reach mode and PLink™	
	IR In/Out	Stereo Mini Jack (M3) x 1 / x 1			Stereo Mini Jack (M3) x 1 / x 1	
	Function Slot	x1 (Intel® SDM Specification Capability)			x1 (Intel® SDM specification)	
	Power Requirements	AC 110 - 240 V 50 Hz / 60 Hz			AC 110 - 240 V 50 Hz / 60 Hz	
	Power Consumption	685 W	480 W		385 W	320 W
	Power Off Condition	Approx. 0.3 W	Approx. 0.3 W		Approx. 0.3 W	Approx. 0.3 W
	Stand-by Condition	Approx. 0.5 W	Approx. 0.5 W		Approx. 0.5 W	Approx. 0.5 W
	Dimensions (W x H x D) *Including handles.	2194 x 1249 x 90 mm (86.35" x 49.15" x 3.54")	1928 x 1099 x 86 mm (75.91" x 43.27" x 3.39")		1681 x 959 x 73 mm (66.15" x 37.75" x 2.87")	1458 x 836 x 77 mm (57.40" x 32.90" x 3.02")
	Carton Size (W x H x D)	2513 x 1704 x 450 mm (98.9" x 67.1" x 17.7")	2224 x 1427 x 373 mm (87.6" x 56.2" x 14.7")		1832 x 1283 x 280 mm (72.13" x 50.52" x 11.03")	1642 x 1037 x 248 mm (64.7" x 40.9" x 9.8")
OPTIONS	Weight	Approx. 90.0 kg (198.5 lbs.)	Approx. 66.0 kg (145.5 lbs.)		Approx. 56.0 kg (123.5 lbs.)	Approx. 36.0 kg (79.4 lbs.)
	Gross Weight	Approx. 138.0 kg (304.3 lbs.)	Approx. 89.0 kg (196.3 lbs.)		Approx. 71.0 kg (156.6 lbs.)	Approx. 47.0 kg (103.7 lbs.)
	Pitch for Wall-Hanging	VESA Compliant 800 x 500 mm (31.5" x 19.7")			VESA Compliant 400 x 400 mm (15.8" x 15.8")	
	Built-in Speaker	20 W [10 W + 10 W]			Yes	
	Orientation	Landscape/Portrait ³			Landscape/Portrait ⁴	
	Tilting Angle ⁵	0-20 degrees forward/backward with landscape/portrait setting			Landscape setting: 0 - 45 degrees forward/backward Portrait setting: 0 - 20 degrees forward/backward	
	Operating Environment	Temperature: 0 °C to 40 °C (32 °F to 104 °F) ⁶ / 0 °C to 35 °C (32 °F to 95 °F) ⁷ , Humidity: 20 % to 80 % (No Condensation)			Temperature: 0 °C to 40 °C (32 °F to 104 °F) ⁶ / 0 °C to 35 °C (32 °F to 95 °F) ⁷ , Humidity: 20 % to 80 % (No Condensation)	
	Storage Environment	Temperature : -20 °C to 60 °C (-4 °F to 140 °F) / Humidity: 20 % to 80 % (Non-condensation)			Temperature: -20 °C to 60 °C (-4 °F to 140 °F), Humidity: 20 % to 80 % (No Condensation)	
	Operating Time ⁸	24 h/day			24 h/day	
	12G-SDI Terminal Board	TY-SB01QS	TY-SB01QS		TY-SB01QS	TY-SB01QS
TERMINAL	3G-SDI Terminal Board	TY-SB01SS	TY-SB01SS		TY-SB01SS	TY-SB01SS
	Pedestal	—	—		TY-ST55PE9	TY-ST55PE9
	Wall-hanging Bracket	TY-WK98PV1	TY-WK98PV1		TY-WK98PV1	TY-WK98PV1
	Early Warning Software ⁹	ET-SWA100/105 Series	ET-SWA100/105 Series		ET-SWA100/105 Series	ET-SWA100/105 Series
	Digital Interface Box	ET-YFB100G	ET-YFB100G		ET-YFB100G	ET-YFB100G
	DIGITAL LINK Switcher	ET-YFB200G	ET-YFB200G		ET-YFB200G	ET-YFB200G
	Auto Display Adjustment Upgrade Kit ¹⁰	TY-VUK10	TY-VUK10		TY-VUK10	TY-VUK10

1: Input: HDCP2.2 Output: NG, Input: HDCP1.4 Output: HDCP1.4, Input: No HDCP Output: No HDCP 2: RGB/YPbPr switchable.

3: When installing the display vertically, be sure that the Power Indicator comes to the lower side.

4: When installing the display vertically, be sure that the Power Indicator comes to the upper side.

5: Please contact your sales representative with regard to the tilt angle before installation. 6: For up to 1400 m (4593 ft) altitude.

7: For between 1400 m (4593 ft) to 2800 m (9186 ft) altitude.

8: In case of long time, the moving image is recommended to be displayed. If you display a still picture for an extended period, the image retention might remain on the screen. However, image retention can gradually disappear by displaying a moving images.

9: Multi Monitoring & Control Software Ver.2.0 or later is required. Part number suffix may differ depending on the license type.

10: Download the latest Video Wall Manager from Global Website in advance. (<https://panasonicnet.cns/prodisplays/download/software/vwm/>)

These terminal boards are able to input 12G-SDI/3G-SDI signals into displays supporting Intel® SDM specification slots.

12G-SDI Terminal Board
TY-SB01QS



3G-SDI Terminal Board
TY-SB01SS Limited Stock



The main software version of the display that supports this terminal board depends on the model. See pages 24-25 for compatible models.

SQ1 Series



Model no.		TH-55SQ1	TH-49SQ1
DISPLAY PANEL	Screen size (Diagonal)/Aspect Ratio	55-inch (1387.8 mm) /16:9	49-inch (1232.0 mm) /16:9
	Panel Type	IPS/Edge LED	IPS/Edge LED
	Effective Display Area (W x H)	1209.6 x 680.4 mm (47.62" x 26.78")	1073.8 x 604.0 mm (42.27" x 23.77")
	Resolution (H x V)	3840 x 2160	3840 x 2160
	Brightness	500 cd/m ²	500 cd/m ²
	Contrast Ratio	1100:1	1100:1
	Response Time	8.0 ms (G to G)	8.0 ms (G to G)
TERMINAL	Viewing Angle (Horizontal/Vertical)	178° / 178° (CR≥10)	178° / 178° (CR≥10)
	Panel Surface Treatment	Anti-Glare (Haze 28 %)	Anti-Glare (Haze 28 %)
	HDMI In	HDMI TYPE A Connector x 2 (HDCP2.2 supported)	
	DisplayPort In	DisplayPort x 1 (HDCP2.2 supported) ¹	
	DisplayPort Out	DisplayPort x 1 (HDCP1.4 supported) ¹	
	USB	USB Connector (TYPE-A) x 2, DC 5 V/2 A, DC 5V/1A (USB 3.0 Supported)	
	DVI-D In	DVI-D 24-pin x 1 (DVI Revision 1.0 Compliant), HDCP 1.1 compatible	
GENERAL	Audio In (L/R)	Stereo Mini Jack (M3) x 2 (Shared with PC In)	Stereo Mini Jack (M3) x 2 (Shared with PC In)
	PC In	Mini D-sub 15-pin x 1 (Female)	
	Audio In (L/R)	Stereo Mini Jack (M3) x 2 (Shared with DVI-D In)	
	Audio Out	30 W (15 W + 15 W) 10% THD	
	Serial In	D-Sub 9-pin x 1, RS232C Compatible	
	DIGITAL LINK	RJ45 x 1, 100 BASE-TX, Compatible with long reach mode and PLink™	
	LAN	RJ45 x 1, 10 BASE-T / 100 BASE-TX, Compatible with PLink™	
OPTIONS	IR In/Out	Stereo Mini Jack (M3) x 1/ x 1	
	Function Slot	x1 (Intel® SDM specification)	
	Power Requirements	AC 110 - 240 V 50 Hz / 60 Hz	AC 110 - 240 V 50 Hz / 60 Hz
	Power Consumption	300 W	285 W
	Power Off Condition	Approx. 0.3 W	Approx. 0.5 W
	Stand-by Condition	Approx. 0.5 W	Approx. 0.3 W
	Dimensions (W x H x D) *including handles	1240 x 714 x 74 mm (48.82" x 28.09" x 2.91")	1105 x 637 x 74 mm (43.48" x 25.08" x 2.88")
GENERAL	Carton Size (W x H x D)	1404 x 879 x 203 mm (55.3" x 34.6" x 8.0")	1248 x 800 x 185 mm (49.2" x 31.5" x 7.8")
	Bezel Width	T:12.2 mm (0.48"), B:15.8 mm (0.62"), L/R:12.7 mm (0.50")	T/B:14.2 mm (0.56"), L/R:12.9 mm (0.51")
	Weight	Approx. 25.5 kg (56.3 lbs.)	Approx. 21.0 kg (46.3 lbs.)
	Gross Weight	Approx. 34.0 kg (75.0 lbs.)	Approx. 27.0 kg (59.6 lbs.)
	Pitch for Wall-Hanging	VESA Compliant 400 x 400 mm (15.8" x 15.8")	
	Built-in Speaker	Yes	
	Orientation	Landscape/Portrait ²	
GENERAL	Tilting Angle ³	Landscape setting: 0 - 45 degrees forward/backward Portrait setting: 0 - 45 degrees forward/backward	
	Operating Environment	Temperature: 0 °C to 40 °C (32 °F to 104 °F) ⁴ / 0 °C to 35 °C (32 °F to 95 °F) ⁵ , Humidity: 20 % to 80 % (No Condensation)	
	Storage Environment	Temperature: -20 °C to 60 °C (-4 °F to 140 °F), Humidity: 20 % to 80 % (No Condensation)	
	Operating Time ⁶	24 h/day	
	12G-SDI Terminal Board	TY-SB01QS	TY-SB01QS
	3G-SDI Terminal Board	TY-SB01SS (Limited Stock)	TY-SB01SS (Limited Stock)
	Pedestal	TY-ST55PE9	TY-ST43PE9
GENERAL	Wall-Hanging Bracket	—	
	Digital Interface Box	ET-YFB100G	ET-YFB100G
	DIGITAL LINK Switcher	ET-YFB200G	ET-YFB200G
	Early Warning Software ⁷	ET-SWA100/105 Series	ET-SWA100/105 Series
	Auto Display Adjustment Upgrade Kit ⁸	TY-VUK10	TY-VUK10

1: Input: HDCP 2.2 Output: NG / Input: HDCP 1.4 Output: HDCP 1.4 / Input: No HDCP Output: No HDCP

2: When installing the display vertically, be sure that the power indicator comes to the right side.

3: Please contact your sales representative with regard to the tilt angle before installation.

4: For up to 1400 m (4593 ft) altitude. 5: For between 1400m (4593 ft) to 2800 m (9186 ft) altitude.

6: In case of long time, the moving image is recommended to be displayed. If you display a still picture for an extended period, the image retention might remain on the screen. However, image retention can gradually disappear by displaying a moving images.

7: Multi Monitoring & Control Software Ver. 2.1 or later is required. Part number suffix may differ depending on the license type.

8: Download the latest Video Wall Manager from Global Website in advance. (<https://panasonic.net/cns/prodisplays/download/software/vwm/>)

SQE2 Series

Preliminary Available from CY2023 1H

Standard



Model no.		TH-98SQE2	TH-86SQE2
DISPLAY PANEL	Screen Size (Diagonal)/Aspect Ratio	98-inch class/16:9	86-inch class/16:9
	Effective Display Area (W x H)	2158.8 x 1214.3 mm	1895.0 x 1065.9 mm
	Resolution (H x V)	3840 x 2160	3840 x 2160
	Brightness (Typ)	500 cd/m ²	500 cd/m ²
	Contrast Ratio	1200:1	1100:1
	Dynamic Contrast Ratio	50000:1	50000:1
	Response Time (Typ.)	8.0 msec (G to G)	8.0 msec (G to G)
TERMINAL	Viewing Angle (Horizontal/Vertical)	178° / 178° (CR>10)	178° / 178° (CR>10)
	Panel Surface Treatment	Anti-Glare (Haze 25 %)	Anti-Glare (Haze 28 %)
	HDMI™ In/DIGITAL Out	HDMI™ (HDCP2.2) x 4 / HDMI™ (HDCP2.2) x 1	
	DisplayPort In	DisplayPort x 1	
	USB	USB Type-A x 2, USB Type-A (Internal) x 1, USB Type-C (DC 5 V/3 A) x 1	
	Audio Out	Stereo Mini Jack (φ3.5 mm) x 1, SPDIF x 1	
	Serial In	Stereo Mini Jack(φ3.5 mm) x 1, RS-232C Compatible	
GENERAL	LAN	RJ45 x 1, 10BASE-T/100BASE-TX/1000BASE-T	
	IR In	Stereo Mini Jack (φ3.5 mm) x 1	
	Function Slot	Intel® SDM standard (66 W(TBD))	
	Wi-Fi	Yes (USB Dongle)	
	Bluetooth	Yes (USB Dongle) Bluetooth5.1 with BLE	
	Power Requirements	AC 110 - 240 V 50 Hz / 60 Hz	AC 110 - 240 V 50 Hz / 60 Hz
	Power Consumption	TBD	TBD
GENERAL	Power Off Condition	TBD	TBD
	Stand-by Condition	TBD	TBD
	Dimensions (W x H x D) ¹	2216 x 1271 x 99 mm (87.25" x 50.02" x 3.87")	1929 x 1100 x 81 mm (75.91" x 43.28" x 3.16")
	Carton Size (W x H x D)	2435 x 1684 x 387 mm (95.87" x 66.30" x 15.24")	2163 x 1405 x 380 mm (85.16" x 55.32" x 14.96")
	Bezel Width	28.2 mm (1.11") (T/R/L/R)	15.3 mm (0.6") (T/R/L/R)
	Weight	Approx. 99.8 kg (220.1 lbs.)	Approx. 62.9 kg (138.7 lbs.)
	Gross Weight	TBD	TBD
GENERAL	Pitch for Wall-Hanging	VESA Compliant 800 x 400 mm, Installed by: M8 screws	VESA Compliant 600 x 400 mm, Installed by: M8 screws
	Built-in Speaker	(6 W x 2) x 2	
	Orientation ²	Landscape/Portrait	
	Tilting Angle ³	20 degrees forward and backward with landscape/portrait setting	
	Operating Environment	Temperature: 0 °C to 40 °C (32 °F to 104 °F) for up to 1400 m (4593 ft) altitude/ 0 °C to 35 °C (32 °F to 95 °F) for between 1400 m to 2800 m (4593 ft to 9186 ft) altitude Humidity: 20 % to 80 % (No Condensation), Altitude: lower than 2800 m (9186 ft)	
	Storage Environment	Temperature: -20 °C to 60 °C (-4 °F to 140 °F), Humidity: 20 % to 80 % (No Condensation)	
	Operating Time ⁴	24 h/day	
OPTIONS	HTML5 Browser	HTML5 (Vwed)	
	Android-OS	Yes	
	12G-SDI Terminal Board ⁵	TY-SB01QS	TY-SB01QS
	Wireless Presentation System Receiver Board	TY-SB01WP	TY-SB01WP
	DIGITAL LINK Board ⁶	TY-SB01DL	TY-SB01DL
	Early Warning Software ⁷	ET-SWA100/105 Series	ET-SWA100/105 Series

1: Not including remote controller sensor box.

2: When installing the Display vertically, be sure to rotate clockwise and install.

3: Please contact your sales representative with regard to the tilt angle before installation.

4: Displaying a still image for a long time may cause burn-in (image persistence artifacts), it could be mitigated when display video image.

5: Some functions are not supported. 6: LAN control is not supported.

7: Multi Monitoring & Control Software Ver. 2.1 or later is required. Suffix of the part number may differ depending on the license type.

SQE2 Series

Preliminary Available from CY2023 1H

Standard



Model no.		TH-75SQE2	TH-65SQE2	TH-55SQE2	TH-50SQE2	TH-43SQE2
DISPLAY PANEL	Screen Size (Diagonal)/Aspect Ratio	75-inch class/16:9	65-inch class/16:9	55-inch class/16:9	50-inch class/16:9	43-inch class/16:9
	Effective Display Area (W x H)	1649.6 x 927.9 mm (64.94" x 36.53")	1428.4 x 803.5 mm (56.23" x 31.63")	1209.6 x 680.4 mm (47.62" x 26.78")	1095.8 x 616.4 mm (43.14" x 24.26")	941.1 x 529.4 mm (37.05" x 20.84")
	Resolution (H x V)	3840 x 2160	3840 x 2160	3840 x 2160	3840 x 2160	3840 x 2160
	Brightness (Typ)	500 cd/m ²	500 cd/m ²	500 cd/m ²	500 cd/m ²	500 cd/m ²
	Contrast Ratio	1200:1	1200:1	1200:1	5000:1	1200:1
	Dynamic Contrast Ratio	50000:1	50000:1	50000:1	50000:1	50000:1
	Response Time	8.0 ms (typ.)	8.0 ms (typ.)	8.0 ms (typ.)	9.5 ms (typ.)	8.0 ms (typ.)
	Viewing Angle (Horizontal/Vertical)	178° / 178° (CR>10)	178° / 178° (CR>10)	178° / 178° (CR>10)	178° / 178° (CR>10)	178° / 178° (CR>10)
Panel Surface Treatment		Anti-Glare (Haze 25 %)	Anti-Glare (Haze 25 %)	Anti-Glare (Haze 25 %)	Anti-Glare (Haze 25 %)	Anti-Glare (Haze 25 %)
TERMINAL	HDMI™ In/DIGITAL Out	HDMI™ (HDCP2.2) x 4 / HDMI™ (HDCP2.2) x 1		HDMI™ (HDCP2.2) x 4 / HDMI™ (HDCP2.2) x 1		
	DisplayPort In	DisplayPort x 1		DisplayPort x 1		
	USB	USB Type-A x 2, USB Type-A (Internal) x 1, USB Type-C (DC 5 V/3 A) x 1		USB Type-A x 2, USB Type-A (Internal) x 1, USB Type-C (DC 5 V/3 A) x 1		
	Audio Out	Stereo Mini Jack (ø3.5 mm) x 1, SPDIF x 1		Stereo Mini Jack (ø3.5 mm) x 1, SPDIF x 1		
	Serial In	Stereo Mini Jack (ø3.5 mm) x 1, RS-232C Compatible		Stereo Mini Jack (ø3.5 mm) x 1, RS-232C Compatible		
	LAN	RJ45 x 1, 10BASE-T/100BASE-TX/1000BASE-T		RJ45 x 1, 10BASE-T/100BASE-TX/1000BASE-T		
	IR In	Stereo Mini Jack (ø3.5 mm) x 1		Stereo Mini Jack (ø3.5 mm) x 1		
	Function Slot	Intel® SDM standard (66 W(TBD))		Intel® SDM standard (66 W(TBD))		Intel® SDM standard (50 W)
GENERAL	Wi-Fi	Yes (Built-in) IEEE 802.11 a/b/g/n Dual, Wi-Fi certificated		Yes (Built-in) IEEE 802.11 a/b/g/n Dual, Wi-Fi certificated		
	Bluetooth	Yes (USB Dongle) Ver4.2, HID, A2DP		Yes (USB Dongle) Ver4.2, HID, A2DP		
	Power Requirements	AC 110 - 240 V 50 Hz / 60 Hz	AC 110 - 240 V 50 Hz / 60 Hz	AC 110 - 240 V 50 Hz / 60 Hz	AC 110 - 240 V 50 Hz / 60 Hz	AC 110 - 240 V 50 Hz / 60 Hz
	Power Consumption	TBD	TBD	TBD	TBD	TBD
	Power Off Condition	TBD	TBD	TBD	TBD	TBD
	Stand-by Condition	TBD	TBD	TBD	TBD	TBD
	Dimensions (W x H x D) ¹	1684 x 968 x 100 mm (66.28" x 38.09" x 3.92")	1456 x 835 x 96 mm (57.32" x 32.84" x 3.78")	1236 x 710 x 84 mm (48.64" x 27.92" x 3.28")	1121 x 646 x 83 mm (44.12" x 25.43" x 3.27")	964 x 555 x 83 mm (37.92" x 21.85" x 3.26")
	Carton Size (W x H x D)	1948 x 1170 x 210 mm (76.70" x 46.07" x 8.27")	TBD	1369 x 874 x 165 mm (53.90" x 34.41" x 6.50")	TBD	TBD
OPTIONS	Bezel Width	15.7 mm (0.62") (T/R/L), 21.5 mm (0.85") (B)	12.9 mm (0.51") (T/R/L), 16.1 mm (0.63") (B)	11 mm (0.43") (T/R/L), 13.8 mm (0.54") (B)	10 mm (0.39") (T/R/L), 15.5 mm (0.61") (B)	8.4 mm (0.33") (T/R/L), 12 mm (0.47") (B)
	Weight	Approx. 37.4 kg (82.5 lbs.)	TBD	TBD	TBD	TBD
	Gross Weight	TBD	TBD	TBD	TBD	TBD
	Pitch for Wall-Hanging	VESA Compliant 600 x 400 mm, Installed by: M8 screws	VESA Compliant 600 x 400 mm, Installed by: M6 screws	VESA Compliant 400 x 400 mm, Installed by: M6 screws	VESA Compliant 200 x 200mm, Installed by: M6 screws	
	Built-in Speaker	(6 W x 2) x 2	10 W x 2	10 W x 2		8 W x 2
	Orientation ²	Landscape/Portrait		Landscape/Portrait		
	Tilting Angle ³	45 degrees forward and backward with landscape/portrait setting		45 degrees forward and backward with landscape/portrait setting		
	Operating Environment	Temperature: 0 °C to 40 °C (32 °F to 104 °F) for up to 1400 m (4593 ft) altitude/ 0 °C to 35 °C (32 °F to 95°F) for between 1400 m to 2800 m (4593 ft to 9186 ft) altitude Humidity: 20 % to 80 % (No Condensation), Altitude: lower than 2800 m (9186 ft)		Temperature: 0 °C to 40 °C (32 °F to 104 °F) for up to 1400 m (4593 ft) altitude/ 0 °C to 35 °C (32 °F to 95°F) for between 1400 m to 2800 m (4593 ft to 9186 ft) altitude Humidity: 20 % to 80 % (No Condensation), Altitude: lower than 2800 m (9186 ft)		
OPTIONS	Storage Environment	Temperature: -20 °C to 60 °C (-4 °F to 140 °F), Humidity: 20 % to 80 % (No Condensation)		Temperature: -20 °C to 60 °C (-4 °F to 140 °F), Humidity: 20 % to 80 % (No Condensation)		
	Operating Time ⁴	24 h/day		24 h/day		
	HTML Browser	HTML5 (Vwed)		HTML5 (Vwed)		
	Android-OS	Yes		Yes		
	12G-SDI Terminal Board ⁵	TY-SB01QS	TY-SB01QS	TY-SB01QS	TY-SB01QS	TY-SB01QS
	Wireless Presentation System Receiver Board	TY-SB01WP	TY-SB01WP	TY-SB01WP	TY-SB01WP	TY-SB01WP
OPTIONS	DIGITAL LINK Board ⁶	TY-SB01DL	TY-SB01DL	TY-SB01DL	TY-SB01DL	TY-SB01DL
	Early Warning Software ⁷	ET-SWA100/105 Series	ET-SWA100/105 Series	ET-SWA100/105 Series	ET-SWA100/105 Series	ET-SWA100/105 Series

1: Not including remote controller sensor box.

2: When installing the Display vertically, be sure to rotate clockwise and install.

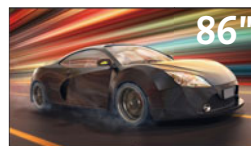
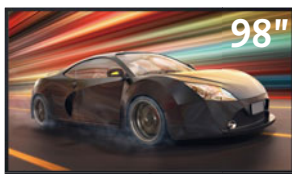
3: Please contact your sales representative with regard to the tilt angle before installation.

4: Displaying a still image for a long time may cause burn-in (image persistence artifacts), it could be mitigated when display video image.

5: Some functions are not supported. 6: LAN control is not supported.

7: Multi Monitoring & Control Software Ver. 2.1 or later is required. Suffix of the part number may differ depending on the license type.

SQE1 Series



Model no.		TH-98SQE1	TH-86SQE1	TH-75SQE1
DISPLAY PANEL	Screen Size (Diagonal)/Aspect Ratio	98-inch (2476.9 mm)/16:9	86-inch (2174.2 mm)/16:9	75-inch class (1892.7 mm)/16:9
	Effective Display Area (W x H)	2158.8 x 1214.3 mm (84.99" x 47.80")	1895.0 x 1065.9 mm (74.60" x 41.96")	1649.6 x 927.9 mm (64.94" x 36.53")
	Resolution (H x V)	3840 x 2160	3840 x 2160	3840 x 2160
	Brightness (Typ)	500 cd/m ²	500 cd/m ²	500 cd/m ²
	Contrast Ratio	1200:1	1100:1	1200:1
	Dynamic Contrast Ratio	50000:1	50000:1	50000:1
	Response Time	8.0 ms (G to G)	8.0 ms (G to G)	8.0 ms (G to G)
	Viewing Angle (Horizontal/Vertical)	178°/178° (CR>10)	178° / 178° (CR≥10)	178°/178° (CR>10)
Panel Surface Treatment		Anti-Glare (Haze 25 %)	Anti-Glare Low Reflection (Haze 28 %)	Anti-Glare Low Reflection (Haze 3 %)
TERMINAL	HDMI In	HDMI TYPE A Connector x 4 (HDCP 2.2 supported)		HDMI TYPE A Connector x 4 (HDCP 2.2 supported)
	DisplayPort In	DisplayPort x 1		DisplayPort x 1
	DisplayPort Out	DisplayPort x 1		DisplayPort x 1
	USB	USB Connector (TYPE-A) x 2, (Type-C) x 1, Internal (Type-A) x 1		USB Connector (TYPE-A) x 2, (Type-C) x 1, Internal (Type-A) x 1
	PC In	Mini D-sub 15-pin x 1 (Female)		Mini D-sub 15-pin x 1 (Female)
	Audio In (L/R)	Pin Jack Terminal (L/R) x 1		Pin Jack Terminal (L/R) x 1
	Audio Out	Stereo Mini Jack (M3) x 1, SPDIF x 1		Stereo Mini Jack (M3) x 1, SPDIF x 1
	Serial In	D-sub 9-pin x 1 (Female), RS-232C Compatible		D-sub 9-pin x 1 (Female), RS-232C Compatible
	LAN	RJ45 x 1		RJ45 x 1
	IR In	Stereo Mini Jack (M3) x 1		Stereo Mini Jack (M3) x 1
GENERAL	Function Slot	x1 (Intel® SDM Specification Capability)		x1 (Intel® SDM Specification Capability)
	Wi-Fi	Dongle, IEEE 802.11. a/b/g/n/ Dual Wi-Fi CERTIFIED		Built-in, IEEE 802.11. a/b/g/n/ Dual Wi-Fi CERTIFIED
	Power Requirements	AC 110 - 240 V 50 Hz / 60 Hz	AC 110 - 240 V 50 Hz / 60 Hz	AC 110 - 240 V 50 Hz / 60 Hz
	Power Consumption	703 W (SLOT not in use: 650 W)	364 W (SLOT not in use: 312 W)	334 W (SLOT not in use: 280 W)
	Power Off Condition	0 W	0 W	0 W
	Stand-by Condition	Approx. 0.5 W	Approx. 0.5 W	Approx. 0.5 W
	Dimensions (W x H x D) ¹	2216 x 1271 x 99 mm (87.25" x 50.02" x 3.87")	1929 x 1100 x 81 mm (75.91" x 43.28" x 3.16")	1684 x 968 x 100 mm (66.28" x 38.09" x 3.92")
	Carton Size (W x H x D)	2435 x 1684 x 387 mm (95.87" x 66.30" x 15.24")	2163 x 1405 x 380 mm (85.16" x 55.32" x 14.96")	1948 x 1170 x 210 mm (76.70" x 46.07" x 8.27")
	Bezel Width	28.2 mm (1.11") (T/R/L/B)	15.3 mm (0.6") (T/R/L/B)	15.7 mm (0.62") (T/R/L), 21.5 mm (0.85") (B)
	Weight	Approx. 99.8 kg (220.1 lbs.)	Approx. 62.9 kg (138.7 lbs.)	Approx. 37.4 kg (82.5 lbs.)
OPTIONS	Gross Weight	Approx. 150 kg (330.7 lbs.)	Approx. 187.4 lbs. (85.0 kg)	Approx. 52.0 kg (114.7 lbs.)
	Pitch for Wall-Hanging	VESA Compliant 800 x 400 mm (31.6" x 15.8")	VESA Compliant 600 x 400 mm (23.6" x 15.8")	VESA Compliant 600 x 400 mm (23.6" x 15.8")
	Built-in Speaker	24 W [12 W + 12 W]	24 W [12 W + 12 W]	24 W [12 W + 12 W]
	Orientation ²	Landscape/Portrait		Landscape/Portrait
	Tilting Angle ³	0-20 degrees forward with landscape/portrait setting		0-20 degrees forward with landscape/portrait setting
	Operating Environment	Temperature: 0 °C to 40 °C (32 °F to 104 °F) for up to 1400 m (4593 ft) altitude/ 0 °C to 35 °C (32 °F to 95°F) for between 1400 m to 2800 m (4593 ft to 9186 ft) altitude Humidity: 20 % to 80 % (No Condensation), Altitude: lower than 2800 m (9186 ft)		Temperature: 0 °C to 40 °C (32 °F to 104 °F) for up to 1400 m (4593 ft) altitude/ 0 °C to 35 °C (32 °F to 95°F) for between 1400 m to 2800 m (4593 ft to 9186 ft) altitude Humidity: 20 % to 80 % (No Condensation), Altitude: lower than 2800 m (9186 ft)
	Storage Environment	Temperature: -20 °C to 60 °C (-4 °F to 140 °F), Humidity: 20 % to 80 % (No Condensation)		Temperature: -20 °C to 60 °C (-4 °F to 140 °F), Humidity: 20 % to 80 % (No Condensation)
	Operating Time ⁴	24 h/day		24 h/day
	12G-SDI Terminal Board	TY-SB01QS	TY-SB01QS	TY-SB01QS
	Wireless Presentation System Receiver Board	TY-SB01WVP	TY-SB01WVP	TY-SB01WVP
OPTIONS	Early Warning Software ⁵	ET-SWA100/105 Series	ET-SWA100/105 Series	ET-SWA100/105 Series

1: Excluding remote control receiver.

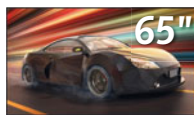
2: When installing the display vertically, be sure that the power indicator comes to the right side.

3: Please contact your sales representative with regard to the tilt angle before installation.

4: In case of long time, the moving image is recommended to be displayed. If you display a still picture for an extended period, the image retention might remain on the screen. However, image retention can gradually disappear by displaying a moving images.

5: Multi Monitoring & Control Software Ver.2.1 or later is required. Suffix of the part number may differ depending on the license type.

SQE1 Series



Model no.	TH-65SQE1	TH-55SQE1		TH-49SQE1	TH-43SQE1
DISPLAY PANEL	Screen Size (Diagonal)/Aspect Ratio	65-inch class (1638.9 mm)/16:9	55-inch class (1387.8 mm)/16:9	49-inch class (1232.0 mm)/16:9	43-inch class (1079.8 mm)/16:9
	Effective Display Area (W x H)	1428.4 x 803.5 mm (56.23" x 31.63")	1209.6 x 680.4 mm (47.62" x 26.78")	1073.8 x 604.0 mm (42.47" x 23.77")	941.1 x 529.4 mm (37.05" x 20.84")
	Resolution (H x V)	3840 x 2160	3840 x 2160	3840 x 2160	3840 x 2160
	Brightness (Typ)	500 cd/m ²	500 cd/m ²	500 cd/m ²	500 cd/m ²
	Contrast Ratio	1200:1	1200:1	1200:1	1200:1
	Dynamic Contrast Ratio	50000:1	50000:1	50000:1	50000:1
	Response Time	8.0 ms (G to G)	8.0 ms (G to G)	8.0 ms (G to G)	8.0 ms (G to G)
	Viewing Angle (Horizontal/Vertical)	178°/178° (CR>10)	178°/178° (CR>10)	178°/178° (CR>10)	178°/178° (CR>10)
	Panel Surface Treatment	Anti-Glare (Haze 1 %)	Anti-Glare (Haze 1 %)	Anti-Glare (Haze 1 %)	Anti-Glare (Haze 1 %)
TERMINAL	HDMI In	HDMI TYPE A Connector x 4 (HDCP 2.2 supported)		HDMI TYPE A Connector x 4 (HDCP 2.2 supported)	
	DisplayPort In	DisplayPort x 1		DisplayPort x 1	
	DisplayPort Out	DisplayPort x 1		DisplayPort x 1	
	USB	USB Connector (TYPE-A) x 2, (Type-C) x 1, Internal (Type-A) x 1		USB Connector (TYPE-A) x 2, (Type-C) x 1, Internal (Type-A) x 1	
	PC In	Mini D-sub 15-pin x 1 (Female)		Mini D-sub 15-pin x 1 (Female)	
	Audio In (L/R)	Pin Jack Terminal (L/R) x 1		Pin Jack Terminal (L/R) x 1	
	Audio Out	Stereo Mini Jack (M3) x 1, SPDIF x 1		Stereo Mini Jack (M3) x 1, SPDIF x 1	
	Serial In	D-sub 9-pin x 1 (Female), RS-232C Compatible		D-sub 9-pin x 1 (Female), RS-232C Compatible	
	LAN	RJ45 x 1		RJ45 x 1	
	IR In	Stereo Mini Jack (M3) x 1		Stereo Mini Jack (M3) x 1	
GENERAL	Function Slot	x1 (Intel® SDM Specification Capability)		x1 (Intel® SDM Specification Capability)	
	Wi-Fi	Built-in, IEEE 802.11. a/b/g/n/ Dual Wi-Fi CERTIFIED		Built-in, IEEE 802.11. a/b/g/n/ Dual Wi-Fi CERTIFIED	
	Power Requirements	AC 110 - 240 V 50 Hz / 60 Hz	AC 110 - 240 V 50 Hz / 60 Hz	AC 110 - 240 V 50 Hz / 60 Hz	AC 110 - 240 V 50 Hz / 60 Hz
	Power Consumption	281 W (SLOT not in use: 229 W)	197 W (SLOT not in use: 143 W)	186 W (SLOT not in use: 133 W)	172 W (SLOT not in use: 119 W)
	Power Off Condition	0 W	0 W	0 W	0 W
	Stand-by Condition	Approx. 0.5 W	Approx. 0.5 W	Approx. 0.5 W	Approx. 0.5 W
	Dimensions (W x H x D) ¹	1460 x 842 x 96 mm (57.46" x 33.12" x 3.77")	1239 x 712 x 104 mm (48.75" x 28.02" x 4.09")	1102 x 635 x 105 mm (43.37" x 24.98" x 4.11")	968 x 558 x 106 mm (38.01" x 21.94" x 4.17")
	Carton Size (W x H x D)	1607 x 980 x 177 mm (63.27" x 38.59" x 6.97")	1369 x 874 x 165 mm (53.90" x 34.41" x 6.50")	1215 x 775 x 165 mm (47.84" x 30.52" x 6.50")	1050 x 718 x 178 mm (41.34" x 28.27" x 7.01")
	Bezel Width	14.7 mm (0.58") (T/R/L), 21.4 mm (0.84") (B)	12.3 mm (0.48") (T/R/L), 15.1 mm (0.59") (B)	11 mm (0.43") (T/R/L), 14.4 mm (0.57") (B)	9.6 mm (0.38") (T/R/L), 13.2 mm (0.52") (B)
	Weight	Approx. 25.8 kg (56.9 lbs.)	Approx. 17.2 kg (38.0 lbs.)	Approx. 13 kg (28.7 lbs.)	Approx. 10.3 kg (22.7 lbs.)
	Gross Weight	Approx. 36 kg (79.4 lbs.)	Approx. 24 kg (53.0 lbs.)	Approx. 18 kg (39.7 lbs.)	Approx. 15 kg (33.1 lbs.)
	Pitch for Wall-Hanging	VESA Compliant 400 x 400 mm (15.8" x 15.8")	VESA Compliant 400 x 200 mm (15.8" x 7.9")	VESA Compliant 200 x 200 mm (7.9" x 7.9")	VESA Compliant 200 x 200 mm (7.9" x 7.9")
	Built-in Speaker	16 W [8 W + 8 W]	16 W [8 W + 8 W]	16 W [8 W + 8 W]	16 W [8 W + 8 W]
	Orientation ²	Landscape/Portrait		Landscape/Portrait	
	Tilting Angle ³	0-20 degrees forward with landscape/portrait setting		0-20 degrees forward with landscape/portrait setting	
	Operating Environment	Temperature: 0 °C to 40 °C (32 °F to 104 °F) for up to 1400 m (4593 ft) altitude/ 0 °C to 35 °C (32 °F to 95°F) for between 1400 m to 2800 m (4593 ft to 9186 ft) altitude Humidity: 20 % to 80 % (No Condensation), Altitude: lower than 2800 m (9186 ft)		Temperature: 0 °C to 40 °C (32 °F to 104 °F) for up to 1400 m (4593 ft) altitude/ 0 °C to 35 °C (32 °F to 95°F) for between 1400 m to 2800 m (4593 ft to 9186 ft) altitude Humidity: 20 % to 80 % (No Condensation), Altitude: lower than 2800 m (9186 ft)	
	Storage Environment	Temperature: -20 °C to 60 °C (-4 °F to 140 °F), Humidity: 20 % to 80 % (No Condensation)		Temperature: -20 °C to 60 °C (-4 °F to 140 °F), Humidity: 20 % to 80 % (No Condensation)	
	Operating Time ⁴	24 h/day		24 h/day	
OPTIONS	12G-SDI Terminal Board	TY-SB01QS	TY-SB01QS	TY-SB01QS	TY-SB01QS
	Wireless Presentation System Receiver Board	TY-SB01WVP	TY-SB01WVP	TY-SB01WVP	TY-SB01WVP
	Early Warning Software ⁵	ET-SWA100/105 Series	ET-SWA100/105 Series	ET-SWA100/105 Series	ET-SWA100/105 Series

1: Excluding remote control receiver.

2: When installing the display vertically, be sure that the power indicator comes to the right side.

3: Please contact your sales representative with regard to the tilt angle before installation.

4: In case of long time, the moving image is recommended to be displayed. If you display a still picture for an extended period, the image retention might remain on the screen. However, image retention can gradually disappear by displaying a moving images.

5: Multi Monitoring & Control Software Ver.2.1 or later is required. Suffix of the part number may differ depending on the license type.

EQ2 Series



Model no.		TH-86EQ2	TH-75EQ2	TH-65EQ2
DISPLAY PANEL	Screen Size (Diagonal)/Aspect Ratio	86-inch (2174.2 mm) /16:9	75-inch (1892.7 mm) /16:9	65-inch (1638.9 mm) /16:9
	Effective Display Area (W x H)	1895.0 x 1065.9 mm (74.60" x 41.96")	1649.6 x 927.9 mm (64.94" x 36.53")	1428.4 x 803.5 mm (56.23" x 31.63")
	Resolution (H x V)	3840 x 2160	3840 x 2160	3840 x 2160
	Brightness (Typ)	500 cd/m ²	500 cd/m ²	500 cd/m ²
	Contrast Ratio	1200:1	1200:1	1200:1
	Dynamic Contrast Ratio	50000:1	50000:1	50000:1
	Response Time	8.0 ms (G to G)	8.0 ms (G to G)	8.0 ms (G to G)
	Viewing Angle (Horizontal/Vertical)	178°/178° (CR>0)	178°/178° (CR>0)	178°/178° (CR>0)
Panel Surface Treatment		Anti-Glare (Haze 25 %)	Anti-Glare (Haze 25 %)	Anti-Glare (Haze 25 %)
TERMINAL	HDMI In	HDMI TYPE-A Connector x 3 (HDCP2.2 supported)		HDMI TYPE-A Connector x 3 (HDCP2.2 supported)
	Audio In (L/R)	Stereo Mini Jack (M3) x 1 (Shared with AV/PC In)		Stereo Mini Jack (M3) x 1 (Shared with AV/PC In)
	PC In	Mini D-sub 15-pin x 1 (Female)		Mini D-sub 15-pin x 1 (Female)
	Audio In (L/R)	Stereo Mini Jack (M3) x 1		Stereo Mini Jack (M3) x 1
	USB	Type A: DC 5 V/1 A, USB 3.0 is supported, Type A: DC 5 V/2 A, USB 2.0 is supported, Type C: max ~ 60W (Power Delivery compatible), USB2.0 is supported, DisplayPort Alternate mode compatible		Type A: DC 5 V/1 A, USB 3.0 is supported, Type A: DC 5 V/2 A, USB 2.0 is supported, Type C: max ~ 60W (Power Delivery compatible), USB2.0 is supported, DisplayPort Alternate mode compatible
	Serial In	D-sub 9-pin x 1, RS-232C Compatible		D-sub 9-pin x 1, RS-232C Compatible
	DIGITAL LINK	—		—
	LAN	RJ45 x 1, RJ45 10BASE-T/100BASE-TX		RJ45 x 1, RJ45 10BASE-T/100BASE-TX
	IR In/Out	Stereo Mini Jack (M3) x 1 / x 1		Stereo Mini Jack (M3) x 1 / x 1
	Audio Out	Stereo Mini Jack (M3) x 1		Stereo Mini Jack (M3) x 1
GENERAL	SLOT	SDM-S / SDM-L, 3.3 V/max.1.1 A, 12 V/max.5.5 A		SDM-S / SDM-L, 3.3 V/max.1.1 A, 12 V/max.5.5 A
	Power Requirements	AC 110 - 240 V 50 Hz / 60 Hz		AC 110 - 240 V 50 Hz / 60 Hz
	Power Consumption	580 W		340 W
	Power Off Condition	Approx. 0.3 W		Approx. 0.3 W
	Stand-by Condition	Approx. 0.5 W		Approx. 0.5 W
	Dimensions (W x H x D ¹)	1929 x 1100 x 96 mm (75.95" x 43.31" x 3.76") ¹	1684 x 962 x 96 mm (66.28" x 37.87" x 3.76") ¹	1463 x 838 x 94 mm (57.58" x 32.97" x 3.68") ¹
	Carton Size (W x H x D)	2130 x 1321 x 248 mm (83.86" x 52.01" x 9.77")	1870 x 1143 x 280 mm (73.63" x 45.00" x 11.03")	1616 x 998 x 187 mm (63.63" x 39.30" x 7.37")
	Bezel Width	15.5 mm (0.61") (T/R/L/B)	14.9 mm (0.59") (T/R/L/B)	14.9 mm (0.59") (T/R/L/B)
	Weight	Approx. 50.7 kg (111.8 lbs.)	Approx. 37.3 kg (82.2 lbs.)	Approx. 29.7 kg (65.5 lbs.)
	Gross Weight	Approx. 71.0 kg (156.5 lbs.)	Approx. 51.0 kg (112.4 lbs.)	Approx. 40.0 kg (88.2 lbs.)
	Pitch for Wall-Hanging	VESA Compliant 600 x 400 mm (23.6" x 15.8"), M8 (Screw hole depth: 20 mm (0.8"))	VESA Compliant 600 x 400 mm (23.6" x 15.8"), M8 (Screw hole depth: 18 mm (0.7"))	VESA Compliant 400 x 400 mm (15.8" x 15.8"), M6 (Screw hole depth: 20 mm (0.8"))
	Built-in Speaker	20 W [10 W + 10 W]		20 W [10 W + 10 W]
	Orientation	Landscape/Portrait		Landscape/Portrait
	Tilting Angle ²	0-20 degrees forward/backward with landscape/portrait setting		0-20 degrees forward/backward with landscape/portrait setting
	Operating Environment	Temperature: 0 °C to 40 °C (32 °F to 104 °F) / for up to 1400 m (4593 ft) altitude, 0 °C to 35 °C (32 °F to 95 °F) / Altitude 1400-2800 m [4593 ft to 9186 ft] / Humidity: 20 % - 80 % (No condensation)		Temperature: 0 °C to 40 °C (32 °F to 104 °F) / for up to 1400 m (4593 ft) altitude, 0 °C to 35 °C (32 °F to 95 °F) / Altitude 1400-2800 m [4593 ft to 9186 ft] / Humidity: 20 % to 80 % (No condensation)
OPTIONS	Storage Environment	Temperature: -20 °C to 60 °C (-4 °F to 140 °F) / Humidity: 20 % to 80 % (Non condensation)		Temperature: -20 °C to 60 °C (-4 °F to 140 °F) / Humidity: 20 % to 80 % (Non condensation)
	Operating Time ³	18 h/day		18 h/day
	Pedestal	—		TY-ST75PE9
	Wall-hanging Bracket	TY-WK98PV1		TY-WK98PV1
Early Warning Software ⁴		ET-SWA100/105 Series	ET-SWA100/105 Series	ET-SWA100/105 Series

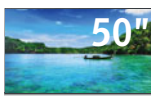
1: Including handles.

2: Please contact your sales representative with regard to the tilt angle before installation.

3: In case of long time, the moving image is recommended to be displayed. If you display a still picture for an extended period, the image retention might remain on the screen. However, image retention can gradually disappear by displaying a moving images.

4: Multi Monitoring & Control Software Ver.2.0 or later is required. Suffix of the part number may differ depending on the licence type.

EQ2 Series



Model no.	TH-55EQ2	TH-50EQ2	TH-43EQ2
Screen Size (Diagonal)/Aspect Ratio	55-inch (1387.8 mm) /16:9	50-inch (1257.3 mm) /16:9	43-inch (1079.8 mm) /16:9
Effective Display Area (W x H)	1209.6 x 680.4 mm (47.62" x 26.78")	1095.8 x 616.4 mm (43.14" x 24.26")	941.1 x 529.4 mm (37.05" x 20.84")
Resolution (H x V)	3840 x 2160	3840 x 2160	3840 x 2160
Brightness (Typ)	500 cd/m ²	500 cd/m ²	500 cd/m ²
Contrast Ratio	1200:1	5000:1	1200:1
Dynamic Contrast Ratio	50000:1	50000:1	50000:1
Response Time	8.0 ms (G to G)	9.5 ms (G to G)	8.0 ms (G to G)
Viewing Angle (Horizontal/Vertical)	178°/178° (CR>0)	178°/178° (CR>0)	178°/178° (CR>0)
Panel Surface Treatment	Anti-Glare (Haze 25 %)	Anti-Glare (Haze 25 %)	Anti-Glare (Haze 25 %)
HDMI In	HDMI TYPE-A Connector x 3 (HDCP2.2 supported)		HDMI TYPE-A Connector x 3 (HDCP2.2 supported)
Audio In (L/R)	Stereo Mini Jack (M3) x 1 (Shared with AV/PC In)		Stereo Mini Jack (M3) x 1 (Shared with AV/PC In)
PC In	Mini D-sub 15-pin x 1 (Female)		Mini D-sub 15-pin x 1 (Female)
Audio In (L/R)	Stereo Mini Jack (M3) x 1		Stereo Mini Jack (M3) x 1
USB	Type A: DC 5 V/1 A, USB 3.0 is supported, Type A: DC 5 V/2 A, USB 2.0 is supported, Type C: max ~ 60W (Power Delivery compatible), USB2.0 is supported, DisplayPort Alternate mode compatible		Type A: DC 5 V/1 A, USB 3.0 is supported, Type A: DC 5 V/2 A, USB 2.0 is supported, Type C: max ~ 60W (Power Delivery compatible), USB2.0 is supported, DisplayPort Alternate mode compatible
Serial In	D-sub 9-pin x 1, RS-232C Compatible		D-sub 9-pin x 1, RS-232C Compatible
DIGITAL LINK	—		—
LAN	RJ45 x 1, RJ45 10BASE-T/100BASE-TX		RJ45 x 1, RJ45 10BASE-T/100BASE-TX
IR In/Out	Stereo Mini Jack (M3) x 1 / x 1		Stereo Mini Jack (M3) x 1 / x 1
Audio Out	Stereo Mini Jack (M3) x 1		Stereo Mini Jack (M3) x 1
SLOT	SDM-S / SDM-L, 3.3 V/max.1.1 A, 12 V/max 5.5 A		SDM-S / SDM-L, 3.3 V/max.1.1 A, 12 V/max 5.5 A
Power Requirements	AC 110 - 240 V 50 Hz / 60 Hz	AC 110 - 240 V 50 Hz / 60 Hz	AC 110 - 240 V 50 Hz / 60 Hz
Power Consumption	280 W	255 W	225 W
Power Off Condition	Approx. 0.3 W	Approx. 0.3 W	Approx. 0.3 W
Stand-by Condition	Approx. 0.5 W	Approx. 0.5 W	Approx. 0.5 W
Dimensions (W x H x D ¹)	1242 x 713 x 66 mm (48.89" x 28.06" x 2.60")	1129 x 649 x 66 mm (44.43" x 25.56" x 2.60")	973 x 562 x 65 mm (38.31" x 22.10" x 2.56")
Carton Size (W x H x D)	1350 x 860 x 160 mm (53.15" x 33.86" x 6.30")	1230 x 800 x 142 mm (48.43" x 31.50" x 5.60")	1070 x 673 x 141 mm (42.13" x 26.50" x 5.56")
Bezel Width	13.9 mm (0.55") (T/R/L/B)	14.9 mm (0.59") (T/R/L/B)	13.9 mm (0.55") (T/R/L/B)
Weight	Approx. 18.0 kg (39.7 lbs.)	Approx. 15.5 kg (34.2 lbs.)	Approx. 11.7 kg (25.8 lbs.)
Gross Weight	Approx. 25.0 kg (55.1 lbs.)	Approx. 21.0 kg (46.3 lbs.)	Approx. 16.0 kg (35.3 lbs.)
Pitch for Wall-Hanging	VESA Compliant 400 x 400 mm (15.8" x 15.8"), M6 (Screw hole depth: 18 mm (0.7"))		VESA Compliant 200 x 200 mm (7.9" x 7.9"), M6 (Screw hole depth 16 mm (0.6"))
Built-in Speaker	20 W [10 W + 10 W]		20 W [10 W + 10 W]
Orientation	Landscape/Portrait		Landscape/Portrait
Tilting Angle ²	0-20 degrees forward/backward with landscape/portrait setting		0-20 degrees forward/backward with landscape/portrait setting
Operating Environment	Temperature: 0 °C to 40 °C (32 °F to 104 °F) / for up to 1400 m (4593 ft) altitude, 0 °C to 35 °C (32 °F to 95 °F) / Altitude 1400-2800 m [4593 ft to 9186 ft] / Humidity: 20 % - 80 % (No condensation)		Temperature: 0 °C to 40 °C (32 °F to 104 °F) / for up to 1400 m (4593 ft) altitude, 0 °C to 35 °C (32 °F to 95 °F) / Altitude 1400-2800 m [4593 ft to 9186 ft] / Humidity: 20 % to 80 % (No condensation)
Storage Environment	Temperature: -20 °C to 60 °C (-4 °F to 140 °F) / Humidity: 20 % to 80 % (Non condensation)		Temperature: -20 °C to 60 °C (-4 °F to 140 °F) / Humidity: 20 % to 80 % (Non condensation)
Operating Time ³	18 h/day		18 h/day
Pedestal	TY-ST55PE9	TY-ST43PE9	TY-ST43PE9
Wall-hanging Bracket	—	—	—
Early Warning Software ⁴	ET-SWA100/105 Series	ET-SWA100/105 Series	ET-SWA100/105 Series

1: Including handles.

2: Please contact your sales representative with regard to the tilt angle before installation.

3: In case of long time, the moving image is recommended to be displayed. If you display a still picture for an extended period, the image retention might remain on the screen. However, image retention can gradually disappear by displaying a moving images.

4: Multi Monitoring & Control Software Ver.2.0 or later is required. Suffix of the part number may differ depending on the licence type.

Elaborate 4K Picture Quality down to the Tiniest Details

SQ1 SQE2 SQE1 EQ2

With approximately 8,290,000 pixels, about four times the pixels of a Full-HD display, images are highly detailed. This dynamic, large-screen display achieves true-to-life finely nuanced images. With an optimal viewing distance of 1.5 times the screen height, the 4K display renders the information you want to transmit with excellent clarity.



* Images are simulated.

Supports HDR and BT.2020 Emulation

SQ1

The SQ1 Series supports HDR (High Dynamic Range) (PQ and HLG). Image reproduction is stunning, from deepest black to sparkling bright highlights. Additionally, they have emulation mode for BT.2020. This enables an emulation display to support the wide color gamut of the ITU-R BT.2020 standard.

Supports the Next-Generation Intel® SDM Specification Slot Standard

SQ1 SQE2 SQE1 EQ2

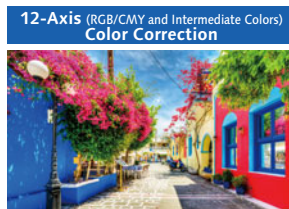
The SQ1 Series is equipped with the new Intel® SDM specification slot standard that supports 4K signals. Combined with the interface board, you can easily use a built-in PC and add various interfaces.



* SQ1 EQ2
*12-Axis compatible

High Color Reproduction (6-Axis & 12-Axis Color Correction)

The color space on LCD displays tends to narrow when the luminance level drops, and it's often accompanied by color phase shifts. Six Axis Coordinate Correction applies image processing to balance the six axes of the three primary colors (RGB) and their complementary colors (CMY). Further, in the SQ1 Series, the color temperature, shade, and brightness parameters of individual images can be adjusted for red, green, and blue, and their complementary colors, cyan, magenta, and yellow. This keeps the intermediate shades of extremely fine colors vibrant and lifelike.



* Images are simulated.

Dynamic Signage is Possible with the Portrait Zoom

SQ1 EQ2

Split the content from image sources, and enlarge the display in a portrait orientation. There is no need to use a special device, such as a processor, while creating content from various images. Placing three 65-inch models vertically creates a display equivalent to 112 inches. This enables highly visible store signage.

* The picture quality may be degraded when the image is enlarged.

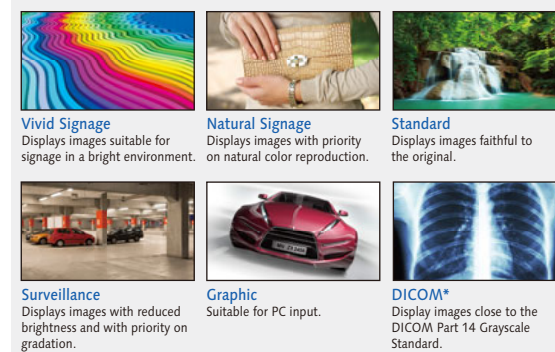


*These functions on the 98/86SQ1 models are compatible with the Software Main Version 3.0000 or later. (For the EQ2 Series: Software Main Version 2.0000 or later is required.) Please contact your sales representative with regard to details.

Easy Display of Images Optimized for the Display Content

SQ1 EQ2

Conventional display panels are preset with display modes such as Standard and Dynamic. The SQ1, and EQ2 Series comes with an extensive display menu to let you select the most suitable mode for the content to be displayed and the viewing environment. You can select the best mode for the video source and the place of display.



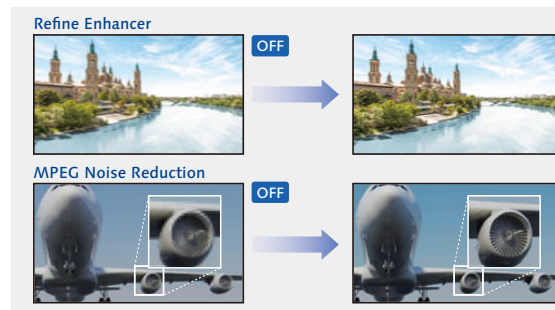
*Although the term "DICOM" is used, this product is not medical equipment. Do not use displayed images for medical purposes such as examination or diagnosis.

•Refine Enhancer

Corrects blurry image contours resulting from resizing, etc., to improve the image resolution.

•MPEG Noise Reduction

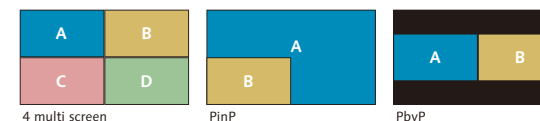
Noise reduction suppresses the block noise and mosquito noise that are characteristic of digital video signals. This faithfully reproduces the inherent beauty of the image.



Multi Input Screen Capability with No Processor Required

SQ1

Multi Input Screen Capability with No Processor Required The SQ1 Series can simultaneously display multiple images on a single screen. In addition to 4 multi screens, the SQ1 Series can display 2 screens, such as PinP and PbyP. This is ideal for checking details in various applications, such as videoconferences, digital signage, and surveillance monitoring.



Portrait Installation Capability

When the Large size display is installed vertically, it can display a person in almost life-size dimensions. It is ideal for digital signage use because it faithfully reproduces the textures and colors of a model's clothing and accessories. It helps to maintain a high-quality brand image. Vertical installation also has no effect on the lifetime of the panel.

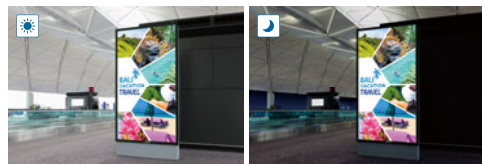


All models are supported

Efficiency and Reliability for Continuous 24-hour Operation

The use of highly durable panel materials and quality electronic components ensures dependable 24-hour operation seven days a week.

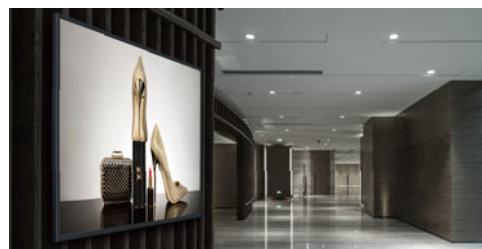
* Display of moving images is recommended when panels are in use for long periods to prevent image retention. Note that image burn-in can be gradually rectified with the periodical display of moving images.



A Stylish and slim design Accentuates the Image

The stylish and slim design complies with the ADA standard (a depth of less than 4-inch (approx.100 mm) with brackets) in all important aspects. The narrow bezel displays higher-impact images, further enhancing the 4K picture quality. The slim profile isn't the least oppressive even when installed in a hanging configuration.

* The availability of the TY-WK98PV1 varies depending on the country.



* ADA stands for the "Americans with Disabilities Act," a United States law made to protect people with disabilities from discrimination.

Fanless Design

Standard models robust fanless design prevents problems caused by the intake of dusty air. The displays can be safely installed and operated in high-traffic environments.

Enables Writing on the Display Screen

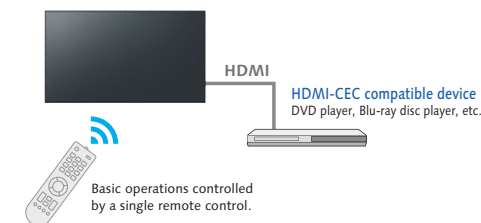
The EQ2 Series is equipped with a whiteboard function. By setting the USB receiver of the mouse on the display, you can use the mouse to write on the display screen and zoom in/out. This is useful for facilitating efficient meetings.



HDMI CEC Device Linking Supported

HDMI-CEC compatible devices can be connected to the display by an HDMI cable, enabling the basic operations (such as power ON/OFF) of the compatible devices to be controlled by the display's remote control. Power ON/OFF of the display can also be switched using only the remote control (or main unit buttons) of the HDMI-CEC compatible devices.

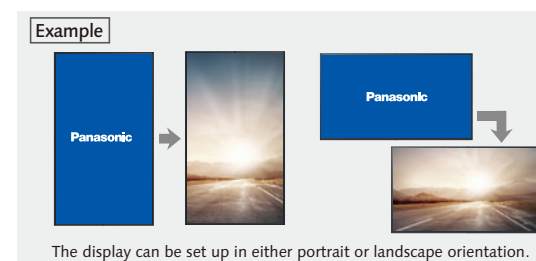
* The control of all devices cannot be guaranteed.



Customizable Original Screen

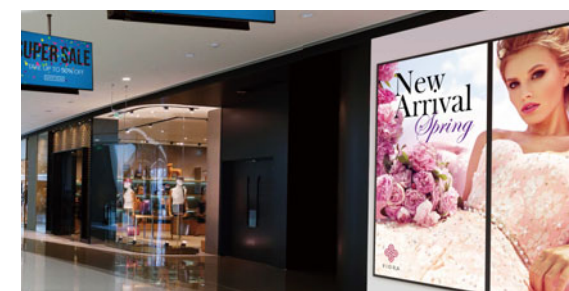
An original image created by your company or other desired picture can be displayed when the unit is turned on and when there is no input signal. The image data for the original screen can be transferred and stored in the display unit via a USB memory. This function allows a company logo mark, brand image, etc., to be displayed when there is no input signal.

* Certain limitations apply to the format for original screen.
* The SQ1/EQ2 Series is compatible with 3480 x 2160 and 1920 x 1080 resolution.



4K Daisy Chain can be Constructed with Even Higher Resolution Multi-Screens

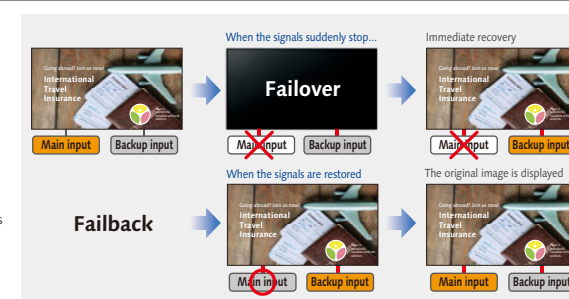
The SQ1 Series is equipped with DisplayPort input/output terminals. Construct a multi-screen that can output 4K images by installing multiple units and connecting them in a daisy chain.



Failover and Failback Safeguards for Mission Critical Situations

These models are equipped with a variety of signal input terminals. If the main video and audio signals are interrupted, the system immediately switches to alternative signals. This makes it ideal for mission critical control rooms and surveillance centers. If the main signals are restored, the original image is displayed.

* The usable combinations of main and backup signals are limited.
For details, see the product website.



Simple Signage Operation with No STB

SQ1 EQ2

The display can automatically start showing pictures when a USB memory containing data is inserted. The display unit can be used as digital signage without a set-top box or PC. And the content can be displayed smoothly without including the black screen display. What's more, the order of content playback and playback time can be programmed. Content can also be rewritten and multiple displays can be operated via LAN.*



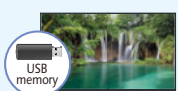
■ Applicable format

Still Image	JPG, JPEG, JPE, BMP*
Motion Image	AVI, MKV, ASF, WMV, TS, MTS, MP4, 3GP, MOV, FLV, F4V

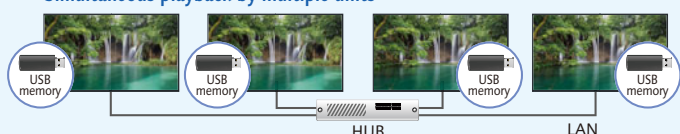
* BMP is supported only by the EQ2 Series.
* The SQ1/EQ2 Series is compatible with the 4K signal.

- If it is difficult to insert a USB memory due to installation conditions, use a commercially available extension cable.
- Some files cannot be played back even if they are in the supported format. Regarding restrictions, see the operation manual.
- * Multi Monitoring & Control Software (free) is required.

Playback by one unit



Simultaneous playback by multiple units



One of up to four display units becomes the parent unit, and the other units display images in sync with the parent unit. This enables the display of images in perfect sync when the panels are arranged next to each other.

Play USB Content Instantly

* The playable application format, GUI and operation procedure for the SQ1/SQ2/SQ1 Series' Media Player function are different from those of other models.

SQ1 * SQE2 SQE1 EQ2

Playing Full HD video, still images, and digital documents from USB storage devices couldn't be easier. Just insert a thumb drive into the USB port and start presenting without needing to connect a PC. The Memory Viewer app enables image* (JPEG, BMP) and video* (WMV, AVI, MOV, MP4, MPG) selection from handy thumbnail previews.

- * In some cases, files may not be viewable even if they are encoded in a supported format.

■ Applicable format

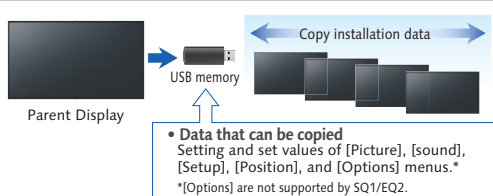
Still Image	JPG, JPEG, JPE, BMP
Motion Image	AVI, MKV, ASF, WMV, GS, MGS, MP4, 3GP, MOV, FLV, F4V



Cloning Function Speeds Up Multiple Display Setup

SQ1 EQ2

When installing multiple displays, the Cloning function lets you use a USB memory (or LAN network) to copy the settings of a parent display to other units, thus greatly shortening the setup time.

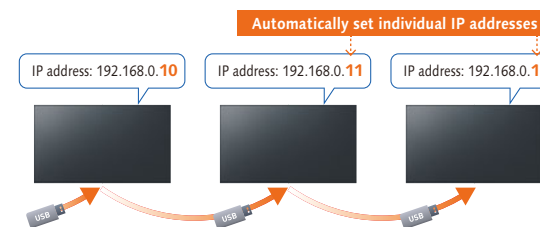


- [Date & Time], [Network Settings], [LAN Settings] and Display ID cannot be copied.
- The Cloning function works only for displays with the same screen size.

USB Memory Network Settings

SQ1 EQ2

Using a USB memory device, the network setting can be made for multiple displays. Individual IP addresses for each unit are automatically set.



Note: Setting images are simulated.

A Conference Room Audio Mode for Easier Listening

SQ1 EQ2

This function makes voices easier to listen to in video conferences or when the video is displayed, for improved audio quality. A setting is also possible to improve sound muffling when the display is mounted on a wall. If the automatic sound volume adjustment function is used, information sharing is possible with the sound level at a comfortable level.

- * This function on the 98/86SQ1 Series is compatible with the Software Main Version 4.0000 or later. (for the EQ2 Series, Soft Main Version 2.000 or later is required.)
Please contact your sales representative with regard to details.

Make Your Signage Easy with Panasonic Application

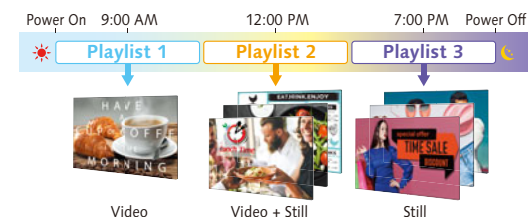
SQ1 EQ2

The SQ1, and EQ2 Series features a USB Media Player function that allows easy signage playback. Content Management Software is an application software for scheduling digital signage playback on a computer. It also allows power ON/OFF to be set.

For more information about Content Management Software Version 4.0.0, please visit:
<https://panasonic.net/cns/prodisplays/download/software/>

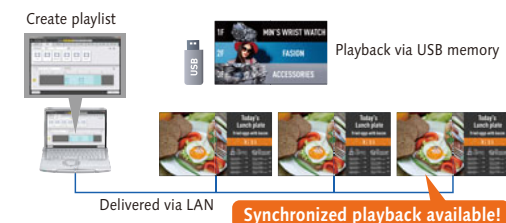
Play Content Automatically with Scheduling Function

Content Management Software for PC Version 3.3.1 (free) enables easy playlist creation with media support including combinations of still and video images. You can set up schedules for playing and closing your media playlist at predetermined dates and times.



Convenient Playlist and Schedule Syncing

Playlists and schedules created with Content Management Software can be transferred to displays with USB memory, or via LAN. Synchronized playback on multiple displays is also supported.

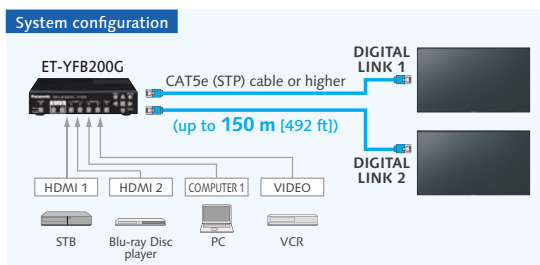


DIGITAL LINK Function Enables Simple Installation and Low System Costs

SQ1

Using DIGITAL LINK makes it possible to transmit video, audio and control signals over a long distance (up to 150 m [492 ft]) with a single LAN cable*. Easy cabling also reduces labor during setup. This provides transmission of high-quality images and sounds, as well as remote control.

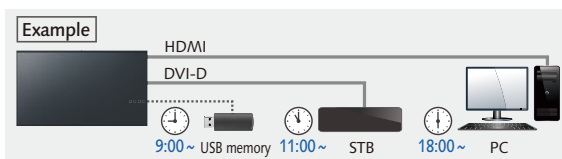
* When connected with the [Long reach] mode, the maximum transmission distance is 150 m (492 ft). In this case, the unit can receive the signals of up to 1080/60p. A CAT5e (STP) cable or higher is required. This supports 4K video over distances of up to 50 m (164 ft) with a single LAN cable.



Timer-Programmable Switching of Device Connection

SQ1 EQ2

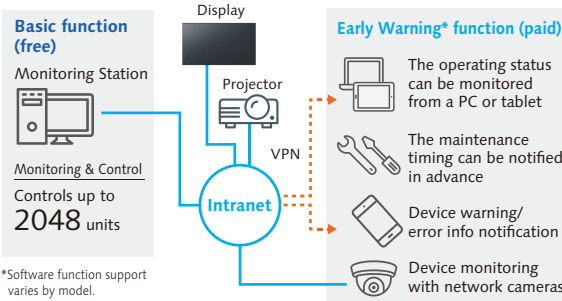
The timer function of the display unit can be used to change connected signal source devices at a desired time. This allows an easy change of displayed content according to the application or the progress of an event.



Multi Monitoring & Control Software

All models are supported

Compatible with Multi Monitoring & Control Software for addition of new functions, such as automatic searching for map displays and registered devices. Displays and peripheral equipment on the intranet can be controlled and their status can be monitored. Also error notification and error indication can be detected by an indication monitoring function (for a fee) for improved maintenance.

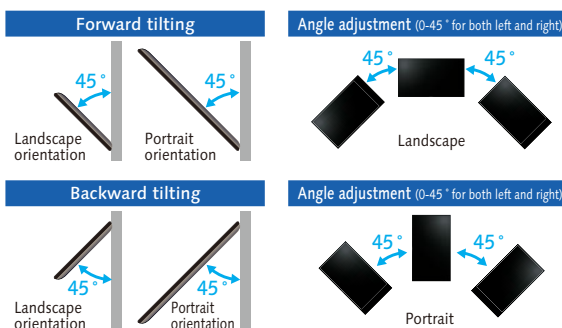


*Software function support varies by model.

Choose the Installation to Match Your Application

Panasonic displays are designed for use in either portrait or horizontal orientation with no effect on panel color and lifespan, further reducing TCO. A tilt installation up to 45 degrees forward or backward is also possible. The angle can be adjusted for easy viewing when installed in a high location.

* The installable angle varies depending on the model. For details, see the specifications page for each model. For more information on the specifications page, please visit the download page. (https://panasonic.net/cns/prodisplays/download/spec_manual/)

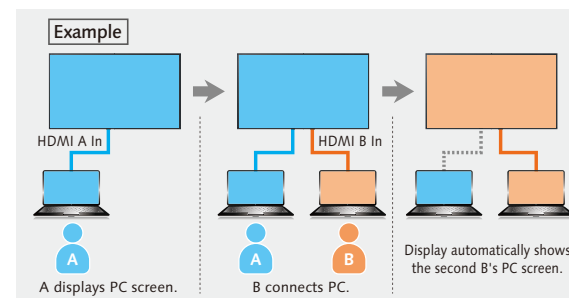


Smooth Switching of Presenters

SQ1 EQ2

These displays automatically switches source signals when the input signal for the current content stops or when an input signal other than the signal of the current content is received. When presenters change during a meeting, the displayed image can be switched easily by simply changing the cable connection, thus eliminating the need to operate the remote control.

* The 2 switching inputs must be set in advance.
* This function may not operate correctly depending on the image playback device.
* Digital-digital switching is supported by the SQ/EQ Series.



Built-in Speakers for the Playback of Content with Sound

All models are supported

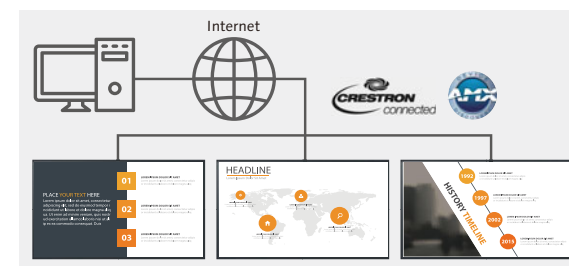
The display unit has built-in speakers so that it can playback content with sound without the connection of external speakers. This allows maximum use of a limited space for the installation of a large-screen display



Supports LAN Content Connection

SQ1 SQE2 SQE1 EQ2

The display can be controlled by LAN or RS-232C. You can configure the display into your existing control system, and can control several devices simultaneously. It also supports AMX or Crestron Connected™ LAN control.



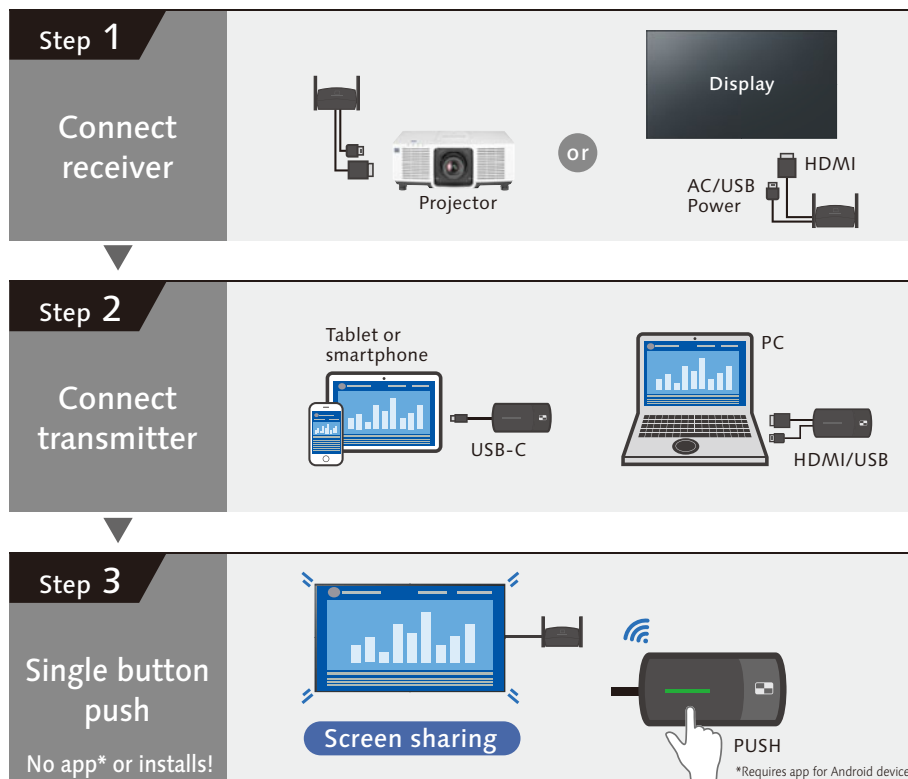
USB Pass Through Function to Save Time and Effort in Meeting Preparation

EQ2

USB devices can be connected to the display via a USB Type-A cable and controlled using a PC connected to the EQ2 via the USB Type-C port. If a camera or speakerphone is permanently connected to the display in a conference room, a user can just plug in their PC and immediately control the device to start the meeting.



- 1 Easy connections with no app
- 2 Single button push a screen sharing
- 3 Multi-screen sharing up to 4



Connects to mobile devices
Genuine Digital AV adaptor by Apple is required.



Presents 4 screens in Full HD
[supports 4K]



High-definition video
max. resolution:
1920 x 1080 pixels, 60p

Low latency image

Connects up to 32 transmitters at once

Lock mode prevents interrupts

HDMI-CEC command compatible

Supports audio transmission

Share screen without transmitter¹

Shared from one transmitter to multiple receivers¹

¹ Firmware update is required. For details, please contact your dealer

Lineup



	Basic Set		Receiver (Box)	Receiver (Board)	Transmitter (HDMI)		Transmitter (USB Type-C)	
Model	TY-WPS1	TY-WPSC1	TY-WPR1	TY-SB01WP	TY-WP2B1	TY-WPB1	TY-WP2BC1	TY-WPBC1
Applicable product	Flat Panel Display / Projector (Panasonic and others)		PC/Tablet/Smartphones		PC/Tablet/Smartphone			
What's included?	1 Receiver (Box) x1 3 Transmitter (HDMI) x2 5 Transmitter case x1	1 Receiver (Box) x1 4 Transmitter (USB Type-C) x2 5 Transmitter case x1	1 Receiver (Box) x1	2 Receiver x1	3 Transmitter (HDMI) x2 5 Case x1	3 Transmitter (HDMI) x1	4 Transmitter (USB Type-C) x2 5 Case x1	4 Transmitter (USB Type-C) x1

Specifications

Product	Receiver (Box)	Receiver (Board)	Transmitter (HDMI)	Transmitter (USB Type-C)
Max resolution/ Framerate	1920 x 1080/60p (max), 3840 x 2160/30p (max)		1920 x 1080/60p (max)	
Number of simultaneous connections	32		—	
Number of sources simultaneous on screen	4		—	
Data Rate	10/100/1000 (Mbps)		—	
Wired				
Wireless	Max. 867 Mbps		Max. 433 Mbps	
Frequency band	5 GHz band 5,150 MHz - 5,250 MHz 36 40 44 48 Channel			
Wireless transmission protocol	IEEE802.11/a/n/ac		IEEE802.11ac	
Security	WPA/WPA2/WPA3 (WPA3-Enterprise is not supported)			
Reach (Max distance between transmitter and receiver)	Max. 30 m (When the line of sight/wave conditions are good)			
Terminals	HDMI/USB-A (female) /RJ45(LAN)		HDMI/USB-A (male)/ USB-A (female)	USB-C (male)/ USB-A (female)
Power	DC 5 V/2 A	12 V/0.9 A (Display Power supply)	DC 5 V/0.9 A	
Power consumption	10 W	10 W	4.5 W	
Operating Environment	Temperature Humidity	0 °C to 35 °C (32 °F to 95 °F) 20 % to 80 % (No condensation)	0 °C to 55 °C (32 °F to 131 °F) 20 % to 80 % (No condensation)	0 °C to 35 °C (32 °F to 95 °F) 20 % to 80 % (No condensation)
Dimensions (W x H x D)	120 x 26 x 81 mm / 4.71" x 1.03" x 3.19" (Excluding antenna)	82 x 25 x 122 mm/ 3.22" x 0.99" x 4.78" (Excluding antenna)	51 x 21 x 73 mm / 2.00" x 0.80" x 2.86" (Excluding cables)	51 x 26 x 73 mm / 2.00" x 1.00" x 2.86" (Excluding cables)
Weight	Approx. 181 g / 0.4 lbs	Approx. 125 g / 0.3 lbs	Approx. 110 g / 0.3 lbs	Approx. 110 g / 0.3 lbs

*Case: Dimensions (W x H x D): 151.3 x 41.6 x 198.0 mm (6.0" x 1.7" x 7.8"),
Weight: Approx. 315 g / 0.7 lbs

For more information, please visit the following website.
<https://panasonic.net/cns/prodisplays/pressit>



Providing a more realistic feeling with the 360-degree camera speakerphone



360 degree camera speakerphone

TY-CSP1

Camera	Viewing angle: 360-degrees Shooting resolution: 2560 x 1440@30p x 4
Microphone	7
Speaker	Output 3 W
Dimensions	Diameter φ63.4 mm/2.5" (excluding the pedestal part) x Height 285 mm/11.3"

Optimal Video and Audio Transmission

TY-CSP1 is a hybrid conference terminal that enables 360-degrees horizontal shooting using four cameras and features microphones and speaker that also cover a wide range of 360 degrees. It supports natural communication with people participating in web conferences with its clear sound collection and amplification.

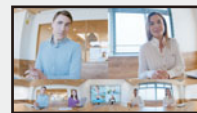
Simple Operation

For easy set-up and use, video, audio and power are shared to the PC via a single USB Type-C cable to save labor when preparing for a meeting. Volume and Video views can be controlled using the buttons arranged on the main unit pedestal. Operating status is instantly visible from the colored LED ring on the unit, it is possible to operate it intuitively.

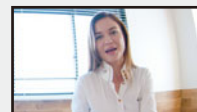
Installation and Portability

With a diameter of φ63.4 mm (2.5 inches) that is easy to grip, it is possible to freely carry it around inside the office and easily carry out web conferences. Alternatively, it can be attached to a tripod or set securely fastened with security slots.

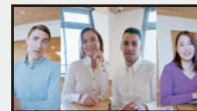
Equipped with various video modes



Dual View



Single View



Multi View



Surround View



Stable View

Panasonic display ideas for a wide range of applications

Meeting room



High image quality at 4K. Complex drawings and large amounts of text can be accurately shared. With Panasonic, a wide range of terminals are available. Can be used immediately after installing.

Recommended models

- EQ2 Series >> 14p~
- PressIT >> 26p~

Control room



Use a 24/7 operation display where interrupted images are simply not permitted.

Recommended models

- SQ1/SQE2/SQE1 Series >> 4p~
- VF/LFV Series >> 30p~

Retail shop



For attractive product displays, the 4K model is also recommended for in-store signage. The narrow bezel provides effective space utilization. An easy-to-see angle can also be adjusted. And Content Management Software makes it easy to control signage for individual shops.

Recommended models

- EQ2 Series >> 14p~
- Content Management Software >> 34p

Classrooms



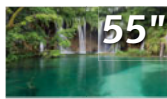
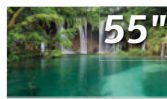
Ritsumeikan University

Installation is possible at a forward inclination of up to 20 degrees to maintain legibility when mounted in high places. Displays course materials for easy viewing even in a bright room.

Recommended models

- EQ2 Series >> 14p~
- PressIT >> 26p~

VF2H/VF2 LFV Series



Model no.	TH-55VF2H	TH-55VF2	TH-55LFV9
DISPLAY PANEL			
Screen size (Diagonal)/Aspect Ratio	55-inch (1387 mm)/16:9	55-inch (1387 mm)/16:9	55-inch (1387.8 mm)/16:9
Panel Type	IPS/Direct LED	IPS/Direct LED	IPS/Direct LED
Effective Display Area (W x H)	1209.6 x 680.3 mm (47.6" x 26.7")	1209.6 x 680.3 mm (47.6" x 26.7")	1209.6 x 680.4 mm (47.62" x 26.78")
Resolution (H x V)	1920 x 1080	1920 x 1080	1920 x 1080
Brightness (Typ.)	700 cd/m ²	500 cd/m ²	500 cd/m ²
Contrast Ratio	1100:1	1100:1	1200:1
Dynamic Contrast Ratio	500000:1	500000:1	500000:1
Response Time	8.0 ms (G to G)	8.0 ms (G to G)	8.0 ms (G to G)
Viewing Angle (Horizontal/Vertical)	178° / 178° (CR≥10)	178° / 178° (CR≥10)	178° / 178° (CR≥10)
Panel Surface Treatment	Advanced Anti-Glare (Haze 28 %)	Advanced Anti-Glare (Haze 28 %)	Anti-Glare (Haze 28 %)
TERMINAL			
HDMI In	HDMI Type A Connector x 1		HDMI Type A Connector x 2
VIDEO In	—		BNC x 1 (Shared with Component In)
Audio In (L/R)	—		Stereo Mini Jack x 1 (Shared with Component In)
Component/RGB In	—		BNC x 1 set (Shared with VIDEO In)
Audio In (L/R)	—		Stereo Mini Jack x 1 (Shared with Video In)
DisplayPort In	DisplayPort x 1 (DP1.1a Dual Mode Only)		DisplayPort x 1 (DP1.1a / DP1.2)
DisplayPort Out	—		DisplayPort x 1
DVI-D In	DVI-D 24-pin x 2 (Female)		DVI-D 24-pin x 1 (Female)
Audio In (L/R)	Stereo Mini Jack (M3) x 1 (Shared with PC In)		Pin Jack (L+R) x 1 set (Shared with PC In)
DVI-D Out	—		—
PC In	Mini D-Sub 15-pin x 1 (Female)		Mini D-Sub 15-pin x 1 (Female)
Audio In (L/R)	Stereo Mini Jack (M3) x 1 (Shared with DVI-D In)		Pin Jack (L+R) x 1 set (Shared with DVI-D In)
DVI-I Out	—		DVI-I 29-pin x 1
USB	USB Connector (TYPE-A) x 1, DC 5 V/500 mA (USB3.0 is not supported.)		USB Connector (TYPE-A) x 1, DC 5 V/500 mA (USB3.0 is not supported.)
Serial In/Out	D-Sub 9-pin x 1 (Male)/ x 1 (Female), RS-232C Compatible D-Sub 9-pin x 1 (Male) / x 1, RS-232C Compatible		2.5 mm Phone Jack x 1 / x 1
DIGITAL LINK In/DIGITAL LINK Out LAN	RJ45 x 1/ x 1, 100 BASE-TX, Compatible with long reach mode and PLink™ (Shared with LAN)		—
IR In/Out	Stereo Mini Jack (M3) x 1/ x 1		RJ45 x 1, 10 BASE-T / 100 BASE-TX, Compatible with PLink™
Audio 1 In	Stereo Mini Jack (M3) x 1		Stereo Mini Jack (M3) x 1 / x 1
Audio 2 In	L/R Pin Jack x 1		—
Audio Out	Stereo Mini Jack (M3) x 1, 0.5 V [rms] Variable (-∞ ~ 0 dB) (1 kHz 0 dB Input, 10 kΩ Load)		Stereo Mini Jack (M3) x 1 0.5 V [rms] Variable (-∞ ~ 0 dB) (1 kHz 0 dB Input, 10 kΩ Load)
GENERAL			
Power Requirements	AC 110 - 240 V 50 Hz / 60 Hz	AC 110 - 240 V 50 Hz / 60 Hz	AC 110 - 240 V 50 Hz / 60 Hz
Power Consumption	300 W	300 W	185 W
Stand-by Condition	Approx. 0.5 W	Approx. 0.5 W	Approx. 0.5 W
Dimensions (W x H x D)	1210.6 x 681.3 x 97.3 mm (47.66" x 26.82" x 3.83")	1210.6 x 681.3 x 97.3 mm (47.66" x 26.82" x 3.83")	1213.4 x 684.2 x 98.0 mm (47.78" x 26.94" x 3.86")
Carton Size (W x H x D)	1395 x 848 x 280 mm (55.0" x 33.4" x 11.1")	1395 x 848 x 280 mm (55.0" x 33.4" x 11.1")	1395 x 848 x 280 mm (55.0" x 33.4" x 11.1")
Bezel Width	T/B/L/R: 0.44 mm (0.018")	T/B/L/R: 0.44 mm (0.018")	L/T: 2.25mm (0.089"), R/B: 1.25mm (0.049")
Bezel to Bezel ¹	0.88 mm (0.034") (Multi Screen)	0.88 mm (0.034") (Multi Screen)	3.5 mm (0.14") (Multi Screen)
Weight	Approx. 23.0 kg (50.7 lbs.)	Approx. 23.0 kg (50.7 lbs.)	27.0 kg (59.5 lbs.)
Gross Weight	Approx. 34.0 kg (75.0 lbs.)	Approx. 34.0 kg (75.0 lbs.)	37.0 kg (81.6 lbs.)
Pitch for Wall-Hanging	VESA compliant 400 x 400 mm (15.8" x 15.8")		VESA compliant 400 x 400 mm (15.8" x 15.8")
External Speaker	—		8 Ω, 20 W [10W + 10 W] (10% THD)
Orientation ²	Landscape/Portrait		Landscape/Portrait
Tilting Angle ²	Vertical Only		Vertical Only
Operating Environment	Temperature: 0 °C to 40 °C (32 °F to 104 °F) ³ / 0 °C to 35 °C (32 °F to 95 °F) ⁴ / Humidity: 20 % to 80 % (No Condensation)		Temperature: 0 °C to 40 °C (32 °F to 104 °F) ³ / 0 °C to 35 °C (32 °F to 95 °F) ⁴ / Humidity: 20 % to 80 % (No Condensation)
Storage Environment	Temperature: -20 °C to 60 °C (-4 °F to 140 °F) / Humidity: 10 % to 90 % (Non condensation)		Temperature: -20 °C to 60 °C (-4 °F to 140 °F) / Humidity: 10 % to 90 % (Non condensation)
Operating Time ⁵	24 h/day		24 h/day
OPTIONS			
Cover Frame Kit	—	—	—
Installation Mount	TY-VK55LV2	TY-VK55LV2	TY-VK55LV2
Early Warning Software ⁶	ET-SWA100/105 Series	ET-SWA100/105 Series	ET-SWA100/105 Series
Auto Display Adjustment Upgrade Kit ⁷	TY-VUK10	TY-VUK10	TU-VUK10
Multi Window Processor	—	—	—

1: Bezel-to-Bezel distance means the combined top and bottom (or left and right) bezel width of adjacent displays in multi-screen. The gap between displays is not included. Note a gap of 0.5 mm (0.02") or more is required when installing multiple displays.

2: Please contact your sales representative with regard to the tilt angle before installation.

3: For up to 1400 m (4593 ft) altitude.

4: For between 1400m (4593 ft) to 2800 m (9186 ft) altitude.

5: In case of long time, the moving image is recommended to be displayed. If you display a still picture for an extended period, the image retention might remain on the screen. However, image retention can gradually disappear by displaying a moving images.

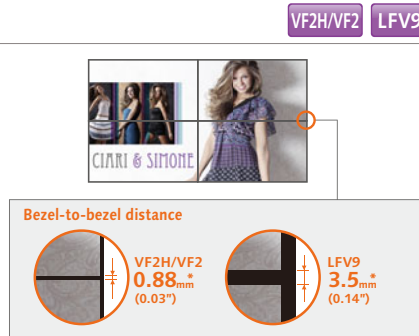
6: Multi Monitoring & Control Software Ver. 2.1 or later is required. Suffix of the part number may differ depending on the license type.

7: Download the latest Video Wall Manager from Global Website in advance. (<https://panasonic.net/cns/prodisplays/download/software/vwm/>)

Narrow Bezel for Seamless Video Walls

Narrow frames on Panasonic's LCD Video Wall Series reduce bezel-to-bezel distance to a near-invisible 0.88 mm*. Even when viewed close-up, screen borders are almost indiscernible, resulting in truly spectacular large-format images.

* TH-55VF2H/55VF2 features 0.88 mm (0.03"), and TH-55LFV9 3.5 mm (0.14"), bezel-to-bezel distance. Bezel-to-bezel distance refers to the combined top and bottom (or left and right) bezel-width of adjacent displays in video-wall configuration. The gap between displays is not included. Note that a gap of 0.5 mm or more is required when installing multiple displays.

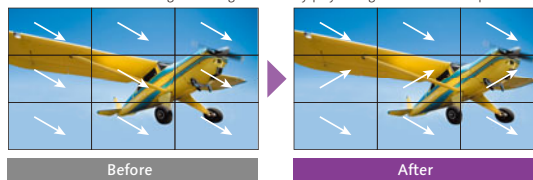


Improved Multi-Screen Video Visibility

When high-speed video is played on multiple screens in a video wall, some image misalignment can occur between vertically adjacent panels. VF2H, and VF2 Series feature a Reverse Scan Function that alternates the scanning direction of vertically adjacent displays to improve image alignment. Frame Control Function, meanwhile, adjusts the number of video frames displayed to reproduce images with natural fluidity.

Reverse Scan Function

Reverses direction of image scanning to smoothly play enlarged video on multiple screens

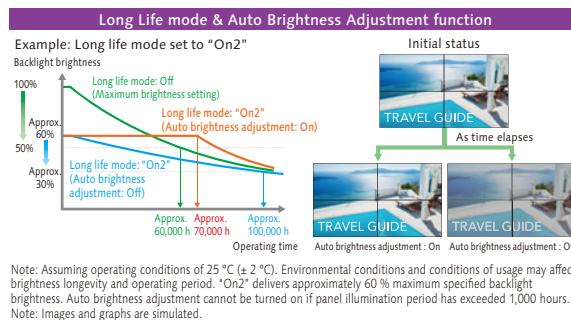


Note: Images are simulated.

Delivers Stable Brightness for Up to 8 Years*

The VF2H, VF2 Series incorporates Long Life mode and a new Auto Brightness Adjustment function. In Long Life mode, backlight brightness is optimized to extend product life. Auto Brightness Adjustment function corrects light output automatically according to the rate of backlight deterioration to maintain constant brightness for longer.

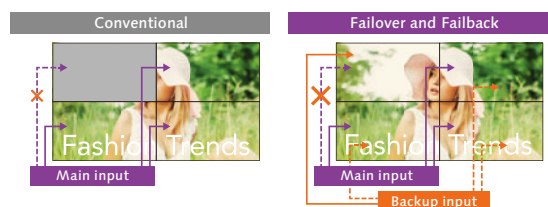
* Figure is approximate when operating continuously for 24 hours x 365 days.



Failover and Failback Safeguards Maintain Image Display

Digital signal inputs comprise one or two DVI-D terminals together with HDMI, DisplayPort, DIGITAL LINK*, and USB terminals. If primary audio-video signals are interrupted, the display immediately switches to an alternative input. This makes the Panasonic LCD Video Wall Series well suited for use in control rooms and in other applications where uninterrupted playback is essential.

* DIGITAL LINK available on VF2H, VF2 only. Display Port available on VF2H, VF2 only.



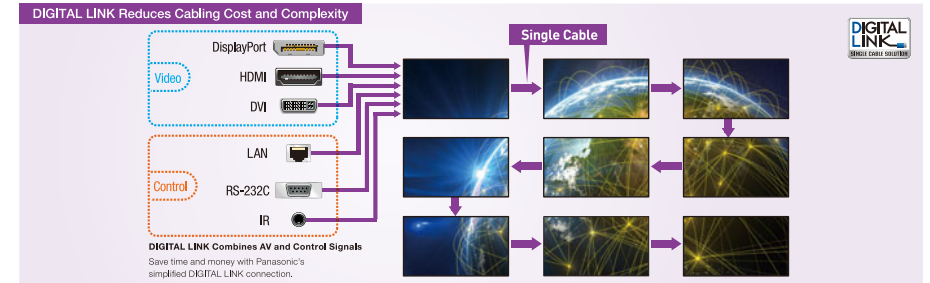
If AV signals via the primary input is interrupted, images are no longer displayed.

If the primary AV signal is interrupted, the system automatically switches to a backup input so video display is maintained.

Note: Possible combinations of main/backup input signals are limited. For details, please visit the Panasonic website.

DIGITAL LINK Simplifies Installation at Lower Cost

Based on HDBaseT™ technology, the DIGITAL LINK connection on VF2H, and VF2 Series displays supports audio, video, and control signal transmission over long distances, and can also be used to daisy-chain multiple displays via a single cable. This eliminates the need for video splitters and other routing devices. The LFV9 Series, meanwhile, supports daisy chain via DVI with separate video and control (serial or IR) connections. Note: CAT5e or higher STP cable required.

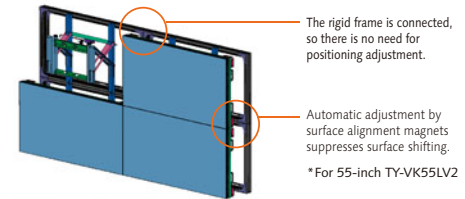


Installation Frame Simplifies Set-up

The optional Installation Mount makes it much easier to configure a video wall. There's no need for complicated display positioning, and fluctuations between installers are covered. It also saves time and cuts labor costs.

Video wall fluctuations occur when the bezels are not correctly aligned vertically and horizontally and the surfaces are not properly adjusted. Installation is quick and easy using the rigid frame, with easy adjustment using surface alignment magnets. This structure also makes the displays easier to remove when performing maintenance.

*Landscape setting only.

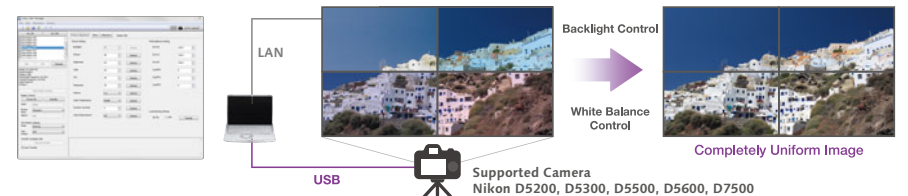


Video Wall Manager Software and Auto Display Adjustment Upgrade Kit

Panasonic's free Video Wall Manager software can be used with LCD Video Wall Series displays. With this software, you can calibrate display color using a color sensor¹ (optional), adjust display settings, and control and manage data via PC. If you upgrade this software with an optional TY-VUK10 Auto Camera Adjustment Kit, you can adjust brightness and color among multiple displays automatically using a compatible camera (Nikon D5200/D5300/D5500/D5600/D7500)².

- Applicable sensors: KONICA MINOLTA (CA-210, CA-310, CA-410 [Probe CA-P427, CA-P410, CA-P427, CA-MP410 verified as of June 30, 2020]), Datalogic (Spyder4, Spyder5, SpyderX) X-Rite (i1Pro2)
- Available only with normal zoom lens: AF-S DX NIKKOR 18-55 mm f/3.5-5.6G VR, AF-S DX NIKKOR 18-140 mm f/3.5-5.6G ED VR, AF-S DX NIKKOR 18-55 mm f/3.5-5.6G VR II, AF-P DX NIKKOR 18-55 mm f/3.5-5.6G VR

With VF2 and TY-VUK10 connected



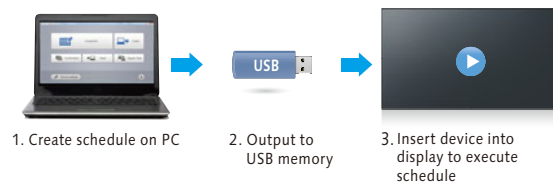
Auto Display Adjustment Upgrade Kit: <https://panasonic.net/cns/prodisplays/products/ty-vuk10/>

Panasonic Software Line-up

In order to maximize the use of professional displays,
Panasonic offers a variety of software and applications (some free of charge, and others for a fee).

Content Management Software

Content Management Software makes it possible to create scheduling data and media playlist on a PC and save it to one or more USB memory. Insert the media into Space Players to execute the schedule. The software reduces complexity for temporary installations or where the device is frequently moved from place to place.

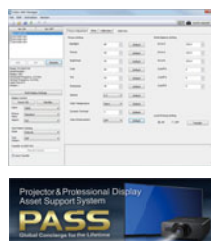


Compatible Display: SQ1 Series, and EQ2 Series
<https://panasonic.net/cns/prodisplays/download/software/>

Auto Display Adjustment Upgrade Kit (TY-VUK10)

Panasonic's free Video Wall Manager software can be used with LCD Video Wall Series displays. With this software, you can calibrate display color using a color sensor, adjust display settings, and control and manage data via PC. If software is upgraded with an optional TY-VUK10 Auto Display Adjustment Upgrade Kit, brightness and color among multiple displays can be automatically calibrated using a compatible camera (Nikon D5200/D5300/D5500/D5600/D7500)*.

* Available only with normal zoom lens: AF-S DX NIKKOR 18-55 mm f/3.5-5.6G VR, AF-S DX NIKKOR 18-140 mm f/3.5-5.6G ED VR, AF-S DX NIKKOR 18-55 mm f/3.5-5.6G VR II, AF-P DX NIKKOR 18-55 mm f/3.5-5.6G VR



For more information, please visit the PASS: <https://panasonic.net/cns/prodisplays/pass/>

Screen Transfer

Screen Transfer is a software that allows a computer screen to be displayed onto one or more displays of devices that are connected by wired LAN. See the User's Manual for the operating method.

* Video distribution can be with existing IP network infrastructure

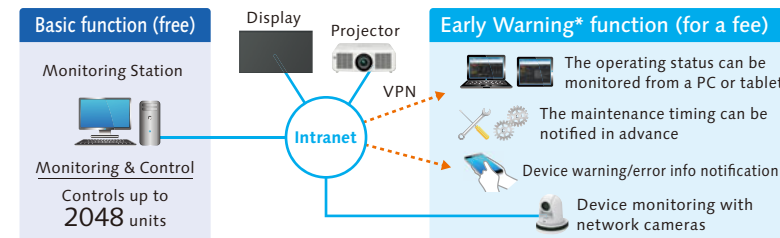
	Wired LAN	
Version	Ver2.0 or later	Ver. 1.0
Number of device connections	Max. 64 units	Max. 8 units
Bandwidth	Approx. 10 Mbps (regardless of the number of connected devices)	Approx. 80 Mbps (when 8 devices are connected)
Auto reconnection	Yes	—
Delivery status check	Yes	—

Compatible Display: SQ1 Series, EQ2 Series
https://panasonic.net/cns/prodisplays/download/software/scr_transfer/

* The number of connections and functions may vary depending on the model. Please refer to the web for details.

Multi Monitoring & Control Software

This free Panasonic software offers monitoring and control of up to 2,048 projectors and professional displays over a LAN network from a single PC to simplify management and maintenance while supporting stable operation. If you also purchase Early Warning Software (ET-SWA100), it will monitor the status of projectors and displays on the intranet and inform you of errors when it detects signs of trouble. This contributes to a lighter maintenance load and reduces costs.



* Software function support varies by model.
* Multi Monitoring & Control Software Ver. 2.0 or higher is required to use the Early Warning function.

Features

• Map Display

Image files, such as floor plans, can be loaded, and the icon for each device can be positioned by 'Drag & Drop'.



• Auto Search of the Devices to Be Registered

You can select the devices to be registered from devices automatically searched on the network.¹

• Other Features

- Monitoring of the status of each device²
- Execution of control commands
- Scheduling function
- Delivery of the contents list³

Early Warning Function (ET-SWA100)

Maintenance Scheduling Suggestion³

It is easier to plan for maintenance by predicting the approximate time for maintenance and service based on the usage monitoring.

Video Stop Detection Using a Network Camera

Images of registered projectors or displays can be monitored regularly by a supported network camera⁴. You can also receive a notification when an abnormality such as a blackout or an image freeze happens.

If you install 'Multi Monitoring & Control Software,' a free 90-day trial is automatically available.



1: Some devices can't be registered using the auto search function depending on the device status and network environment.
2: Software functionality varies depending on the model. 3: Function for supported projectors and professional displays only.
4: Panasonic Network camera (BB-S/DG-S/WV-S series), Panasonic PTZ camera (AW-UE70/HE40/HE130 series).

For more information about compatible displays, please visit the Website:
https://panasonic.net/cns/prodisplays/download/software/multi/dl_files/DeviceList-Multi_EN.pdf

Early Warning function License * If you install 'Multi Monitoring Control Software', a free 90 day trial.
For more information, please visit the PASS: <https://panasonic.net/cns/prodisplays/pass>

Optional Accessories

												Standard								Entry						Video Wall							
		TH-98SQ1	TH-86SQ1	TH-75SQ1	TH-65SQ1	TH-55SQ1	TH-49SQ1	TH-98SQE2	TH-86SQE2	TH-75SQE2		TH-65SQE2	TH-55SQE2	TH-49SQE2	TH-43SQE2	TH-98SQE1	TH-86SQE1	TH-75SQE1	TH-65SQE1	TH-55SQE1	TH-49SQE1	TH-43SQE1	TH-86EQ2	TH-75EQ2	TH-65EQ2	TH-55EQ2	TH-50EQ2	TH-43EQ2	TH-55VF2H	TH-55VF2	TH-55LFV9		
Screen Size (inch)		98	86	75	65	55	49	98	86	75			65	55	49	43	98	86	75	65	55	49	43	86	75	65	55	50	43	55	55	55	
FUNCTION BOARD																																	
12G-SDI Terminal Board	TY-SB01QS	Yes	Yes	Yes	Yes	Yes	Yes	Yes	Yes	Yes			Yes	Yes	Yes	Yes	Yes ²	Yes ²	Yes ²	Yes ²	Yes ²	Yes ²	Yes ²	Yes	Yes	Yes	Yes	Yes	Yes	-	-	-	
3G-SDI Terminal Board (Limited Stock)	TY-SB01SS	Yes ¹	Yes ¹	Yes ¹	Yes ¹	Yes ¹	Yes ¹	-	-	-			-	Yes	Yes	Yes	-	Yes	Yes	Yes	Yes	Yes	-	Yes	Yes	Yes	Yes	Yes	Yes	-	-	-	
Wireless Presentation System Receiver Board	TY-SB01WP	Yes	Yes	Yes	Yes	Yes	Yes	Yes	Yes	Yes			-	Yes	Yes	Yes	Yes	Yes	Yes	Yes	Yes	Yes	-	Yes	Yes	Yes	Yes	Yes	Yes	-	-	-	
DIGITAL LINK Terminal Board	TY-SB01DL	Yes	Yes	Yes	Yes	Yes	Yes	Yes	Yes	Yes			Yes	Yes	Yes	Yes	Yes	Yes	Yes	Yes	Yes	Yes	Yes	Yes	Yes	Yes	Yes	Yes	Yes	-	-	-	
MOUNTING OPTIONS																																	
Pedestal	TY-ST75PE9	-	-	Yes	-	-	-	-	-	-			-	-	-	-	-	-	-	-	-	-	-	-	Yes	Yes	-	-	-	-	-	-	
	TY-ST55PE9	-	-	-	Yes	Yes	-	-	-	-			-	-	-	-	-	-	-	-	-	-	-	-	-	-	Yes	-	-	-	-	-	
	TY-ST43PE9	-	-	-	-	-	Yes	-	-	-			-	-	-	-	-	-	-	-	-	-	-	-	-	-	-	Yes	Yes	-	-	-	
	TY-ST43PE8	-	-	-	-	-	-	-	-	-			-	-	-	-	-	-	-	-	-	-	-	-	-	-	-	-	-	-	-	-	
	TY-ST32PE2	-	-	-	-	-	-	-	-	-			-	-	-	-	-	-	-	-	-	-	-	-	-	-	-	-	-	-	-	-	
Wall-hanging Bracket	TY-WK98PV1	Yes	Yes	Yes	Yes	-		-	-	-			-	-	-	-	-	-	-	-	-	-	-	Yes	Yes	Yes	-	-	-	-	-	-	
Installation Mount (Landscape setting only)	TY-VK55LV2	-	-	-	-	-	--	-	-	-			-	-	-	-	-	-	-	-	-	-	-	-	-	-	-	-	-	Yes	Yes	Yes	
Pitch for Wall Hanging (VESA compliant models)	800 x 500 (M8)	Yes	-	-	-	-	-	-	-	-			-	-	-	-	-	-	-	-	-	-	-	-	-	-	-	-	-	-	-	-	
	800 x 400 (M8)	-	-	-	-	-	-	Yes	-	-			-	-	-	-	Yes	-	-	-	-	-	-	-	-	-	-	-	-	-	-	-	
	600 x 500 (M8)	-	-	-	-	-	-	-	-	-			-	-	-	-	-	-	-	-	-	-	-	-	-	-	-	-	-	-	-	-	
	600 x 400 (M8)	-	-	-	-	-	-	-	Yes	Yes			-	-	-	-	Yes	Yes	-	-	-	-	-	Yes	Yes	-	-	-	-	-	-	-	
	600 x 400 (M6)	-	Yes	Yes	-	-	-	-	-	-			-	-	-	-	-	-	-	-	-	-	-	-	-	Yes	-	-	-	-	-	-	
	400 x 400 (M8)	-	-	-	-	-	-	-	-	-			-	-	-	-	-	-	-	-	-	-	-	-	-	-	-	-	-	-	-	-	
	400 x 400 (M6)	-	-	-	Yes	Yes	-	-	-	-			Yes	-	-	-	-	-	Yes	-	-	-	-	-	-	-	Yes	Yes	-	Yes	Yes	Yes	
	400 x 200 (M6)	-	-	-	-	-	Yes	-	-	-			-	Yes	-	-	-	-	-	Yes	-	-	-	-	-	-	-	-	-	-	-	-	
	200 x 200 (M6)	-	-	-	-	-	-	-	-	-			-	-	Yes	Yes	-	-	-	-	-	Yes	Yes	-	-	-	-	Yes	-	-	-	-	
	100 x 100 (M4)	-	-	-	-	-	-	-	-	-			-	-	-	-	-	-	-	-	-	-	-	-	-	-	-	-	-	-	-	-	
OTHERS																																	
DIGITAL LINK Switcher	ET-YFB200G	Yes	Yes	Yes	Yes	Yes	Yes	-	-	-			-	-	-	-	-	-	-	-	-	-	-	-	-	-	-	-	-	-	-	-	
Digital Interface Box	ET-YFB100G	Yes	Yes	Yes	Yes	Yes	Yes	-	-	-			-	-	-	-	-	-	-	-	-	-	-	-	-	-	-	-	-	-	-	-	
SOFTWARE																																	
Content Management Software (free)		Yes	Yes	Yes	Yes	Yes	Yes	-	-	-			-	-	-	-	-	-	-	-	-	-	-	Yes	Yes	Yes	Yes	Yes	Yes	Yes	Yes	Yes	
Screen Transfer (free)		Yes ³	Yes ³	Yes ³	Yes ³	Yes ³	Yes ³	-	-	-			-	-	-	-	-	-	-	-	-	-	-	Yes	Yes	Yes	Yes	Yes	Yes	Yes	-	-	-
Multi Monitoring & Control Software Compatible (free)		Yes	Yes	Yes	Yes	Yes	Yes	Yes	Yes	Yes			Yes	Yes	Yes	Yes	Yes	Yes	Yes	Yes	Yes	Yes	Yes	Yes	Yes	Yes	Yes	Yes	Yes	Yes	Yes	Yes	
Early Warning Software Compatible (ET-SWA100 Series) ⁴		Yes	Yes	Yes	Yes	Yes	Yes	Yes	Yes	Yes			Yes	Yes	Yes	Yes	Yes	Yes	Yes	Yes	Yes	Yes	Yes	Yes	Yes	Yes	Yes	Yes	Yes	Yes	Yes	Yes	
Video Wall Manager (free)		Yes	Yes	Yes	Yes	Yes	Yes	-	-	-			-	-	-	-	-	-	-	-	-	-	-	-	-	-	-	-	-	-	-	-	
Auto Display Adjustment Upgrade Kit (TY-VUK10)		Yes	Yes	Yes	Yes	Yes	Yes	-	-	-			-	-	-	-	-	-	-	-	-	-	-	-	-	-	-	-	-	-	-	-	

The specification has a case to change without notice.

1: This terminal board is supported only when the main software version of the display is 3.5000 or later and the sub software version of the display is 03.50 or later.

For update, please contact your Panasonic dealer.

2: Some functions are not supported.

3: The Software Main Version 4.40 or later is required.

4: The part number suffix may differ on the license type. Multi Monitoring & Control Software Ver.2.0 or later is required.

For information that is not included on this page, please visit the following website:
<https://panasonic.net/cns/prodisplays/index.html>

Panasonic CONNECT

Weights and dimensions shown are approximate. Depending on the temperature or humidity conditions, uneven brightness may be observed. This is not a malfunction. This unevenness will disappear while applying current continuously. If not, consult the distributor. Specifications and appearance are subject to change without notice. Product availability differs depending on region and country. This product may be subject to export control regulations. Windows, and PowerPoint are trademarks of Microsoft Corporation in the United States and other countries. Android is a registered trademark or trademark of Google Inc. Macintosh, Mac, Mac OS X, iPad, iPhone, iPod touch and iTunes are trademarks of Apple Inc., registered in the U.S. and other countries. Intel® is registered trademark or trademark of Intel Corporation, registered in the U.S. and other countries and regions or registered trademarks. The terms HDMI, HDMI High-Definition Multimedia Interface, HDMI Trade Dress and the HDMI Logos are trademarks or registered trademarks of HDMI Licensing Administrator, Inc. Crestron Connected™ is a trademark of Crestron Electronics, Inc. Miracast are trademarks or registered trademarks of Wi-Fi Alliance. HDBaseT is a trademark of the HDBaseT Alliance. Cisco WebEx is a trademark or registered trademark of Cisco Systems, Inc. and/or its affiliated entities in the United States and other countries. All other trademarks are the property of their respective trademark owners. Images on screen are simulated. ©Panasonic Connect Co., Ltd. 2022. All rights reserved.



Mobile App -
The information of the Panasonic projectors and professional displays from your iOS/Android devices.
panasonic.net/cns/prodisplays/support/mobile_app/



For the latest information about Panasonic Professional Displays, please visit:
Professional Display Global Website - panasonic.net/cns/prodisplays
YouTube - www.youtube.com/PanasonicProDisplay
Facebook - www.facebook.com/panasonicprojectoranddisplay

Note: Following the shift of the Panasonic Group to a holding company system, the Connected Solutions Company of the Panasonic Corporation has changed to Panasonic Connect Co., Ltd. as of April 1, 2022.

All information included here is valid as of December 2022